

LANDA[®] SEA

OPERATOR'S MANUAL

■ SEA3-1100

■ SEA4-2000

■ SEA4-3000



For technical assistance or the dealer nearest you,
consult our web page at www.landa.com

8.913-999.0

Introduction	4
Important Safety Information	4-5
Component Identification	6
Assembly Instructions	7
Operating Instructions	8
Detergent and General Operating Instructions	9
Shutting Down Procedures	10
Troubleshooting	11-12
Preventative Maintenance	13
Oil Change Record	13
Exploded View, Left Side	14-15
Exploded View Parts List	16-17
Float Tank Option Exploded View and Parts List	18-19
Handheld Wireless Exploded View - 1 Step	20
Handheld Wireless Exploded View Parts List - 1 Step	21
Handheld Wireless Exploded View - 2 Step	22
Handheld Wireless Exploded View Parts List - 2 Step	23
Handheld Wireless Operating Instructions	24-25
Hose and Spray Gun Assembly and Parts List	26
Pump Assemblies Exploded View and Parts List	27
Specifications	28-29
LD.1 Series Pump Exploded View and Parts List	30-31
LT.1 Series Pump Exploded View and Parts List	32-33
VRT3 Unloader	34
VB8 Unloader Exploded View and Parts List	35
Warranty	

Model Number _____

Serial Number _____

Date of Purchase _____

The model and serial numbers will be found on a decal attached to the pressure washer. You should record both serial number and date of purchase and keep in a safe place for future reference.

INTRODUCTION & IMPORTANT SAFETY INFORMATION

Thank you for purchasing this Pressure Washer. We reserve the right to make changes at any time without incurring any obligation.

Owner/User Responsibility:

The owner and/or user must have an understanding of the manufacturer's operating instructions and warnings before using this pressure washer. Warning information should be emphasized and understood. If the operator is not fluent in English, the manufacturer's instructions and warnings shall be read to and discussed with the operator in the operator's native language by the purchaser/owner, making sure that the operator comprehends its contents.

Owner and/or user must study and maintain for future reference the manufacturers' instructions.


The operator must know how to stop the machine quickly and understand the operation of all controls. Never permit anyone to operate the engine without proper instructions.

This manual should be considered a permanent part of the machine and should remain with it if machine is resold.

When ordering parts, please specify model and serial number. Use only identical replacement parts.

This machine is to be used only by trained operators.

IMPORTANT SAFETY INFORMATION



WARNING

READ OPERATOR'S MANUAL THOROUGHLY PRIOR TO USE.

WARNING: To reduce the risk of injury, read operating instructions carefully before using.

1. Read the owner's manual thoroughly. Failure to follow instructions could cause malfunction of the machine and result in death, serious bodily injury and/or property damage.
2. Know how to stop the machine and bleed pressure quickly. Be thoroughly familiar with the controls.
3. Stay alert — watch what you are doing.
4. All installations must comply with local codes. Contact your electrician, plumber, utility company or the selling distributor for specific details. If your machine is rated 250 volts or less, single phase will be provided with a ground fault circuit interrupter (GFCI). If rated more than 250 volts, or more than single phase this product should only be connected to a power supply receptacle protected by a GFCI.

DANGER: Improper connection of the equipment-grounding conductor can result in a risk of electrocution. Check with a qualified electrician or service personnel if you are in doubt as to whether the outlet is properly grounded. Do not modify the plug provided with the product - if it will not fit the outlet, have a proper outlet installed by a qualified electrician. Do not use any type of adaptor with this product



WARNING

KEEP WATER SPRAY AWAY FROM ELECTRICAL WIRING.

WARNING: Keep wand, hose, and water spray away from electric wiring or fatal electric shock may result.

5. To protect the operator from electrical shock, the machine must be electrically grounded. It is the responsibility of the owner to connect this machine

to a UL grounded receptacle of proper voltage and amperage ratings. Do not spray water on or near electrical components. Do not touch machine with wet hands or while standing in water. Always disconnect power before servicing.



WARNING

RISK OF EXPLOSION: DO NOT SPRAY FLAMMABLE LIQUIDS.

WARNING: Flammable liquids can create fumes which can ignite, causing property damage or severe injury.

WARNING: Risk of explosion — Do not spray flammable liquids.

6. Do not allow acids, caustic or abrasive fluids to pass through the pump.

7. Never run pump dry or leave spray gun closed longer than 1-2 minutes.

8. Keep operating area clear of all persons.



WARNING

USE PROTECTIVE EYE WEAR AND CLOTHING WHEN OPERATING THIS EQUIPMENT.

WARNING: High pressure spray can cause paint chips or other particles to become airborne and fly at high speeds. To avoid personal injury, eye, hand and foot safety devices must be worn.

9. Eye, hand, and foot protection must be worn when using this equipment.



WARNING

TRIGGER GUN KICKS BACK - HOLD WITH BOTH HANDS

WARNING: Grip cleaning wand securely with both hands before starting. Failure to do this could result in injury from a whipping wand.

IMPORTANT SAFETY INFORMATION



WARNING: *High pressure developed by these machines will cause personal injury or equipment damage. Keep clear of nozzle. Use caution when operating. Do not direct discharge stream at people, or severe injury or death will result.*

17. Do not overreach or stand on unstable support. Keep good footing and balance at all times.
18. Do not operate this machine when fatigued or under the influence of alcohol, prescription medications, or drugs.



19. Follow the maintenance instructions specified in the manual.

10. To reduce the risk of injury, close supervision is necessary when a machine is used near children. Do not allow children to operate the pressure washer. **This machine must be attended during operation.**
11. Never make adjustments on machine while in operation.
12. Be certain all quick coupler fittings are secured before using pressure washer.



WARNING: *Protect machine from freezing.*

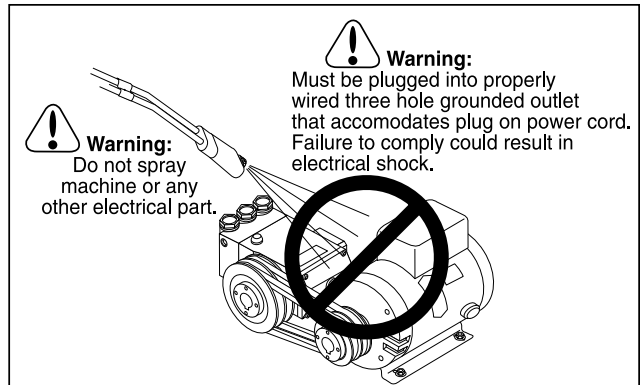
13. To keep machine in best operating conditions, it is important you protect machine from freezing. Failure to protect machine from freezing could cause malfunction of the machine and result in death,

serious bodily injury, and/or property damage. Follow storage instructions specified in this manual.

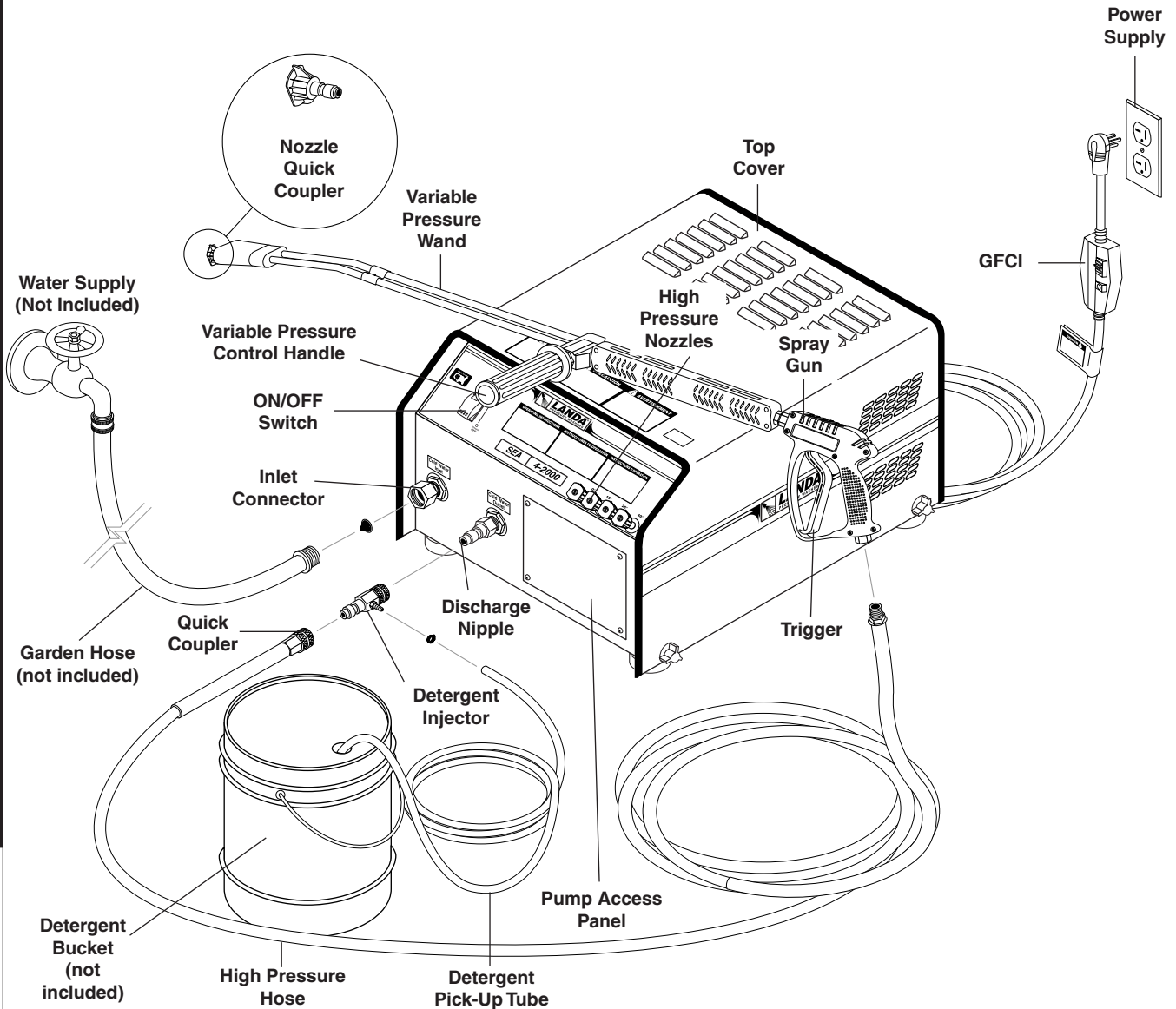
14. Inlet water must be clean fresh water and no hotter than 185°F.
15. Manufacturer will not be liable for any changes made to our standard machines or any components not purchased from us.
16. The best insurance against an accident is precaution and knowledge of the machine.



WARNING: *Be extremely careful when using a ladder, scaffolding or any other relatively unstable location. The cleaning area should have adequate slopes and drainage to reduce the possibility of a fall due to slippery surfaces.*



COMPONENT IDENTIFICATION



Detergent Injector - Allows you to siphon and mix detergents.

High Pressure Hose — Connect one end to water pump discharge nipple and the other end to spray gun.

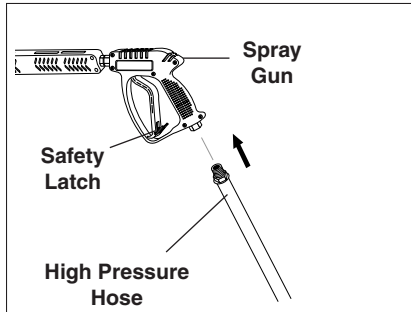
Spray Gun — Controls the application of water and detergent onto cleaning surface with trigger device. Includes safety latch.

Wand — Must be connected to the spray gun.

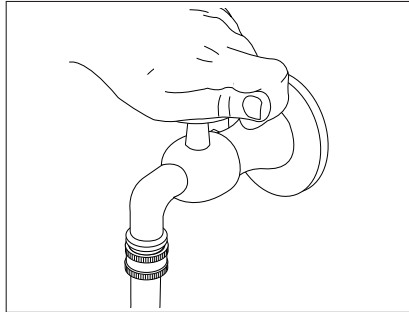
Swivel Connector - Allows free range of movement to avoid coiling hoses.

NOTE: If trigger on spray gun is released for more than 2 minutes, water will leak from valve. Warm water will discharge from pump protector onto floor. This system prevents internal pump damage.

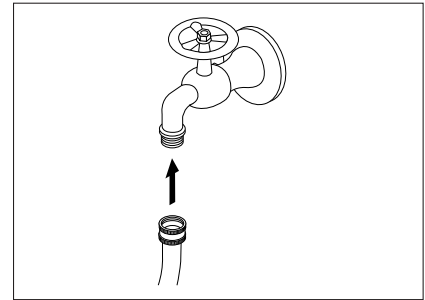
ASSEMBLY INSTRUCTIONS



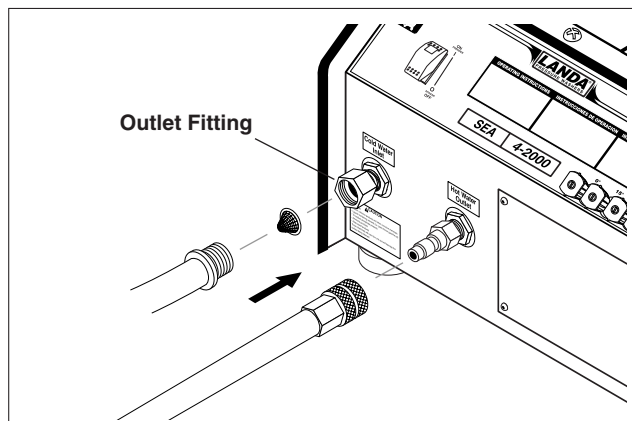
STEP 1: Attach the high pressure hose to the spray gun using teflon tape on hose threads.



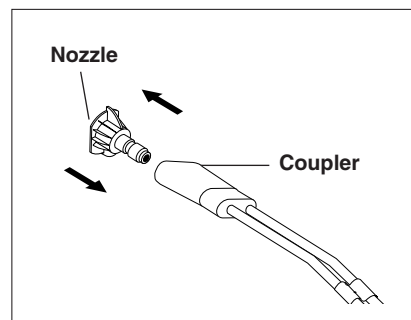
STEP 2: Before installing nozzle, turn on water supply and run machine allowing water to flush through the system until clear.



STEP 3: Connect garden hose to the cold water source.

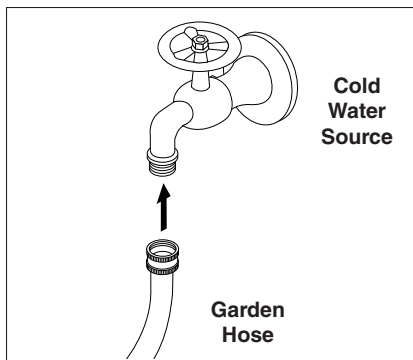


STEP 4: Connect the high pressure hose to the outlet discharge fitting. Push coupler collar forward until secure. Connect the garden hose to pump water inlet. Inspect inlets. **CAUTION: Do not run the pump without water or pump damage will result.**

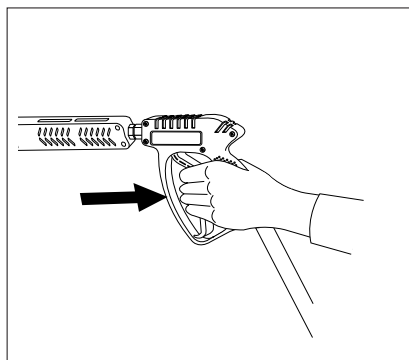


STEP 5: Insert nozzle into coupler. Release the coupler collar and push the nozzle until the collar clicks. Pull the nozzle to make sure it is seated properly.

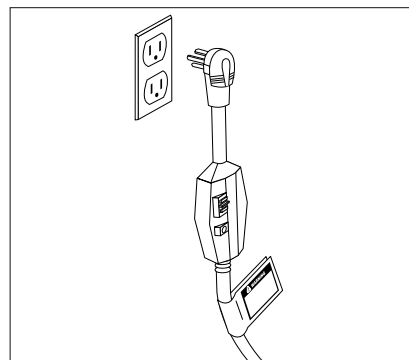
OPERATING INSTRUCTIONS



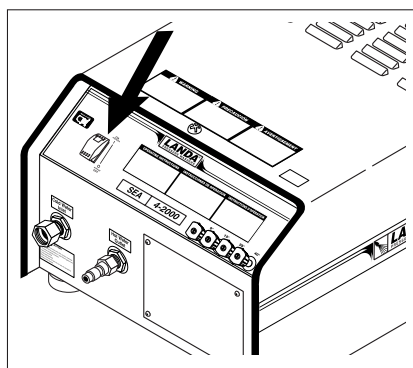
STEP 1: Connect garden hose to the cold water source and turn water on completely. Never use hot water.



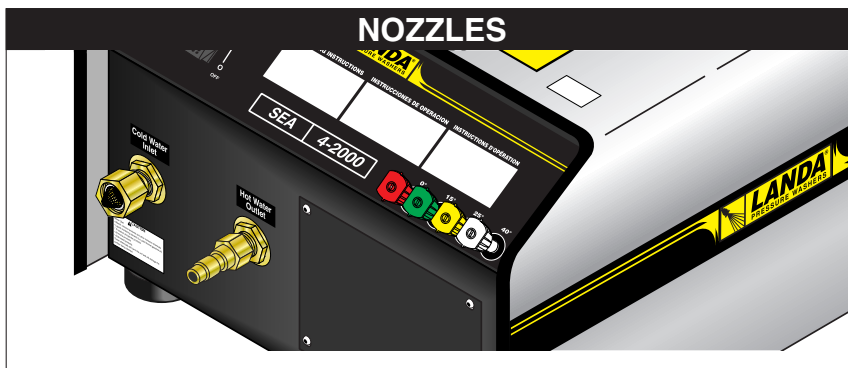
STEP 2: Trigger the spray gun to eliminate trapped air then wait for a steady flow of water to emerge from the spray wand. Then install nozzle.



STEP 4: Connect to appropriate power supply.

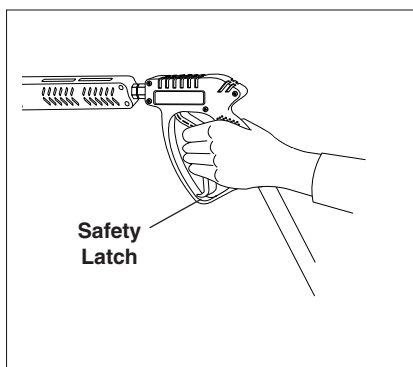


STEP 4: Turn machine on by flipping switch at front of machine.

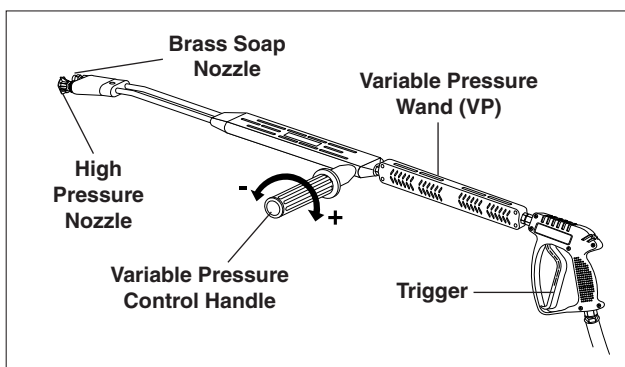


The five color-coded quick connect nozzles provide a wide array of spray widths from 0° to 40° and are easily accessible when placed in the convenient rubber nozzle holder, which is provided on the front of the machine.

NOTE: For a more gentle rinse, select the white 40° or green 25° nozzle. To scour the surface, select the yellow 15° or red 0° nozzle. To apply detergent select the black nozzle.



WARNING! Never replace nozzles without engaging the safety latch on the spray gun trigger.



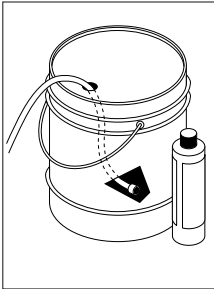
Selection of high or low pressure is accompanied by turning the handle. **Note:** High pressure nozzle must be inserted at end of wand to obtain high pressure. To apply soap read operator's manual.

DETERGENT AND GENERAL OPERATING TECHNIQUES

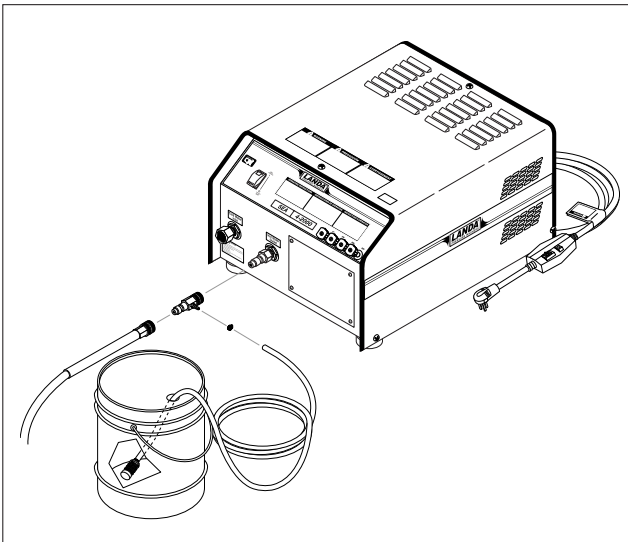
WARNING



WARNING: Some detergents may be harmful if inhaled or ingested, causing severe nausea, fainting or poisoning. The harmful elements may cause property damage or severe injury.

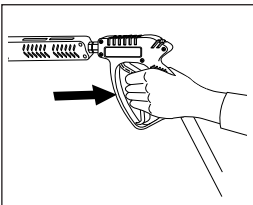


STEP 1: Use detergent designed specifically for pressure washers. Household detergents could damage the pump. Prepare detergent solution as required by the manufacturer. Fill a container with pressure washer detergent. Place the filter end of detergent suction tube into the detergent container.



STEP 2: Apply safety latch to spray gun trigger. Secure black detergent nozzle into quick coupler.

NOTE: Detergent cannot be applied using the Yellow nozzle.



STEP 3: With engine running, pull trigger to operate machine. Liquid detergent is drawn into the machine and mixed with water. Apply detergent to work area. Do not allow detergent to dry on surface.

IMPORTANT: You must flush the detergent injection system after each use by placing the suction tube into a bucket of clean water, then run the pressure washer in low pressure for 1-2 minutes.

THERMAL PUMP PROTECTION

If you run the engine on your pressure washer for 2-3 minutes without pressing the trigger on the spray gun, circulating water in the pump can reach high temperatures. When the water reaches this temperature, the pump protector engages and cools the pump by discharging the warm water onto the ground. This thermal device prevents internal damage to the pump.

CLEANING TIPS

Pre-rinse cleaning surface with fresh water. Place detergent suction tube directly into cleaning solution and apply to surface at low pressure (for best results, limit your work area to sections approximately 6 feet square and always apply detergent from bottom to top). Allow detergent to remain on surface 1-3 minutes. Do not allow detergent to dry on surface. If surface appears to be drying, simply wet down surface with fresh water. If needed, use brush to remove stubborn dirt. Rinse at high pressure from top to bottom in an even sweeping motion keeping the spray nozzle approximately 1 foot from cleaning surface. Use overlapping strokes as you clean and rinse any surface. For best surface cleaning action spray at a slight angle.

Recommendations:

- Before cleaning any surface, an inconspicuous area should be cleaned to test spray pattern and distance for maximum cleaning results.
- If painted surfaces are peeling or chipping, use extreme caution as pressure washer may remove the loose paint from the surface.
- Keep the spray nozzle a safe distance from the surface you plan to clean. High pressure wash a small area, then check the surface for damage. If no damage is found, continue to pressure washing.

CAUTION - Never use:

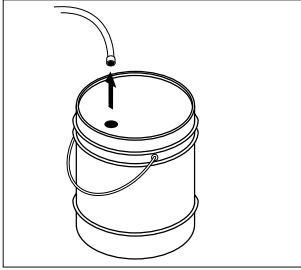
- Bleach, chlorine products and other corrosive chemicals
- Liquids containing solvents (i.e., paint thinner, gasoline, oils)
- Tri-sodium phosphate products
- Ammonia products
- Acid-based products

These chemicals will harm the machine and will damage the surface being cleaned.

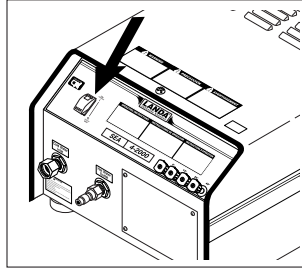
RINSING

It will take a few seconds for the detergent to clear. Apply safety latch to spray gun. Remove black soap nozzle from the quick coupler. Select and install the desired high pressure nozzle. **NOTE:** You can also stop detergent from flowing by simply removing detergent siphon tube from bottle.

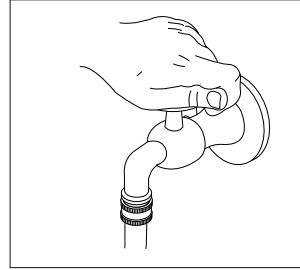
SHUTTING DOWN AND CLEAN-UP



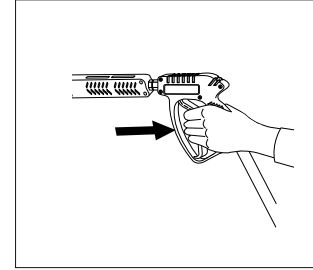
STEP 1: Remove detergent suction tube from container and insert into one gallon of fresh water. Slide nozzle forward for low pressure or to connect black detergent nozzle. Pull trigger on spray gun and siphon water for one minute.



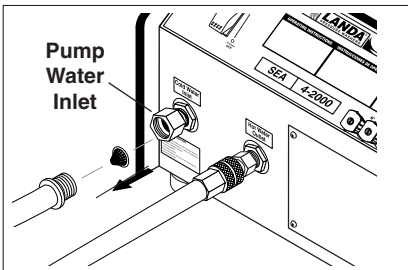
STEP 2: Turn off machine by flipping switch on front of motor.



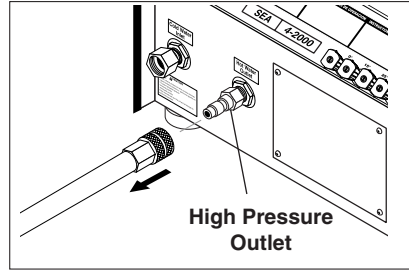
STEP 3: Turn off water supply.



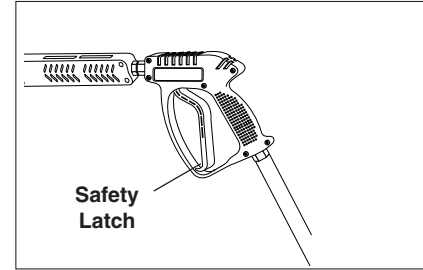
STEP 4: Press trigger to release water pressure.



STEP 5: Disconnect the garden hose from the water inlet on the machine.



STEP 6: Disconnect the high pressure hose from high pressure outlet.



STEP 7: Engage the spray gun safety lock.

STORAGE

Pump Storage



CAUTION

CAUTION: Always store your pressure washer in a location where the temperature will not fall below 32° F (0° C). The pump in this machine is susceptible to permanent damage if frozen.

FREEZE DAMAGE IS NOT COVERED BY WARRANTY.

If you must store your pressure washer in a location where the temperature is below 32° F, you can minimize the chance of damage to your machine by draining your machine as follows:

1. Stop the pressure washer and detach supply hose and high pressure hose. Squeeze the trigger of the spray gun to drain all water from the wand and hose.
2. Restart pressure washer and let it run briefly (about 5 seconds) until water no longer discharges from the high pressure outlet.

TROUBLESHOOTING

PROBLEM	POSSIBLE CAUSE	SOLUTION
PUMP RUNNING NORMALLY BUT PRESSURE LOW ON INSTALLATION	Pump sucking air	Check water supply and possibility of air seepage.
	Check valves sticking	Check and clean or replace if necessary.
	Unloader valve seat faulty	Check and replace if necessary.
	Faulty or misadjusted unloader valve	Tampering with the factory setting may cause personal injury and/or property damage, and will void the manufacturer's warranty.
	Nozzle incorrectly sized	Check and replace if necessary.
	Worn piston packing	Check and replace if necessary.
FLUCTUATING PRESSURE	Valves worn	Check and replace if necessary.
	Blockage in valve	Check and clean out if necessary.
	Pump sucking air	Check water supply connections.
	Worn piston packing	Check and replace if necessary.
	Insufficient water	Check filter and hose for breakage.
PRESSURE LOW AFTER PERIOD OF NORMAL USE	Nozzle worn	Check and replace if necessary.
	Suction or delivery valves worn	Check and replace if necessary.
	Suction or delivery valves blocked	Check and clean if necessary.
	Unloader valve seat worn	Check and replace if necessary.
	Unloader adjusted improperly	Call local Landa dealer.
	Worn piston packing	Check and replace if necessary.
	Bypass valve within unloader is obstructed or leaking	Remove and clean bypass cartridge.
PUMP NOISY	Air in suction line	Check water supply and connections on suction line.
	Broken or weak suction or delivery valve spring	Check and replace if necessary.
	Foreign matter in valves	Check and clean if necessary.
	Worn bearings	Check and replace if necessary.
	Excessive temperature of water	Reduce to below 140° F.

TROUBLESHOOTING

PROBLEM	POSSIBLE CAUSE	SOLUTION
PRESENCE OF WATER IN PUMP OIL	Oil seal worn	Check and replace if necessary.
	High humidity in air	Check and change oil twice as often.
	Piston packing worn	Check and replace if necessary.
WATER DRIPPING FROM UNDER PUMP	Piston packing worn	Check and replace if necessary.
	O-Ring plunger retainer worn	Check and replace if necessary.
OIL DRIPPING FROM PUMP	Oil seal worn	Check and replace if necessary.
EXCESSIVE VIBRATION IN HIGH PRESSURE HOSE	Irregular functioning of the pump valves	Check and replace if necessary.
	Obstruction in filter	Clean inlet filter.
MOTOR WILL NOT RUN	Motor overload	Push in the overload button located on the motor (single phase) or the overload button on the magnetic start switch (three phase).
	Stepdown transformer fuses	Check fuses and voltage. Replace if necessary.
	Coil of magnetic starter defective	Replace coil after the timer and unloader switch have been tested.
MACHINE WILL NOT TURN ON WHEN SWITCH IS PUSHED	Timer is defective	Join wires 15 and 16 together on timer. If machine works, replace timer.

PREVENTATIVE MAINTENANCE

PREVENTATIVE MAINTENANCE

This pressure washer was produced with the best available materials and quality craftsmanship. However, you as the owner, have certain responsibilities for the correct care of the equipment. Attention to regular preventative maintenance procedure will assist in preserving the performance of your equipment. Contact your dealer for maintenance. Regular preventative maintenance will add many hours to the life of your pressure washer. Perform maintenance more often under severe conditions.

MAINTENANCE SCHEDULE		
Pump Oil	Inspect	25 hours or Weekly
	Change	Yearly
Check Valve Clearance		Yearly
Water Filter	Inspect	Every 6 hours or Daily
	Change	Yearly

OIL CHANGE RECORD

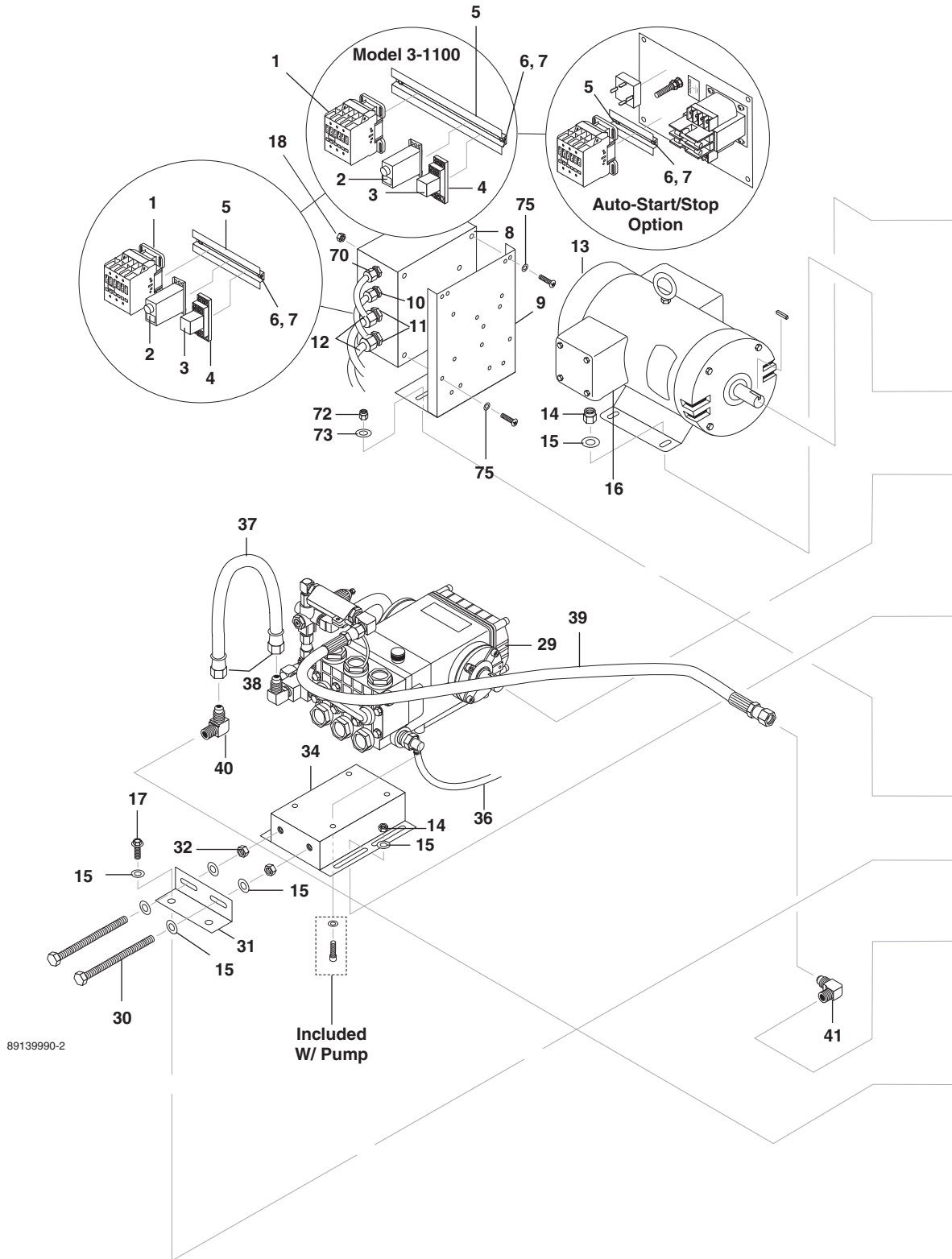
Check pump oil level before first use. Change pump oil after first 50 hours and every month or 500 hours thereafter.

Use SAE 30 weight oil.

Date Oil Changed Month/Day/Year	Estimated Operating Hours Since Last Oil Change

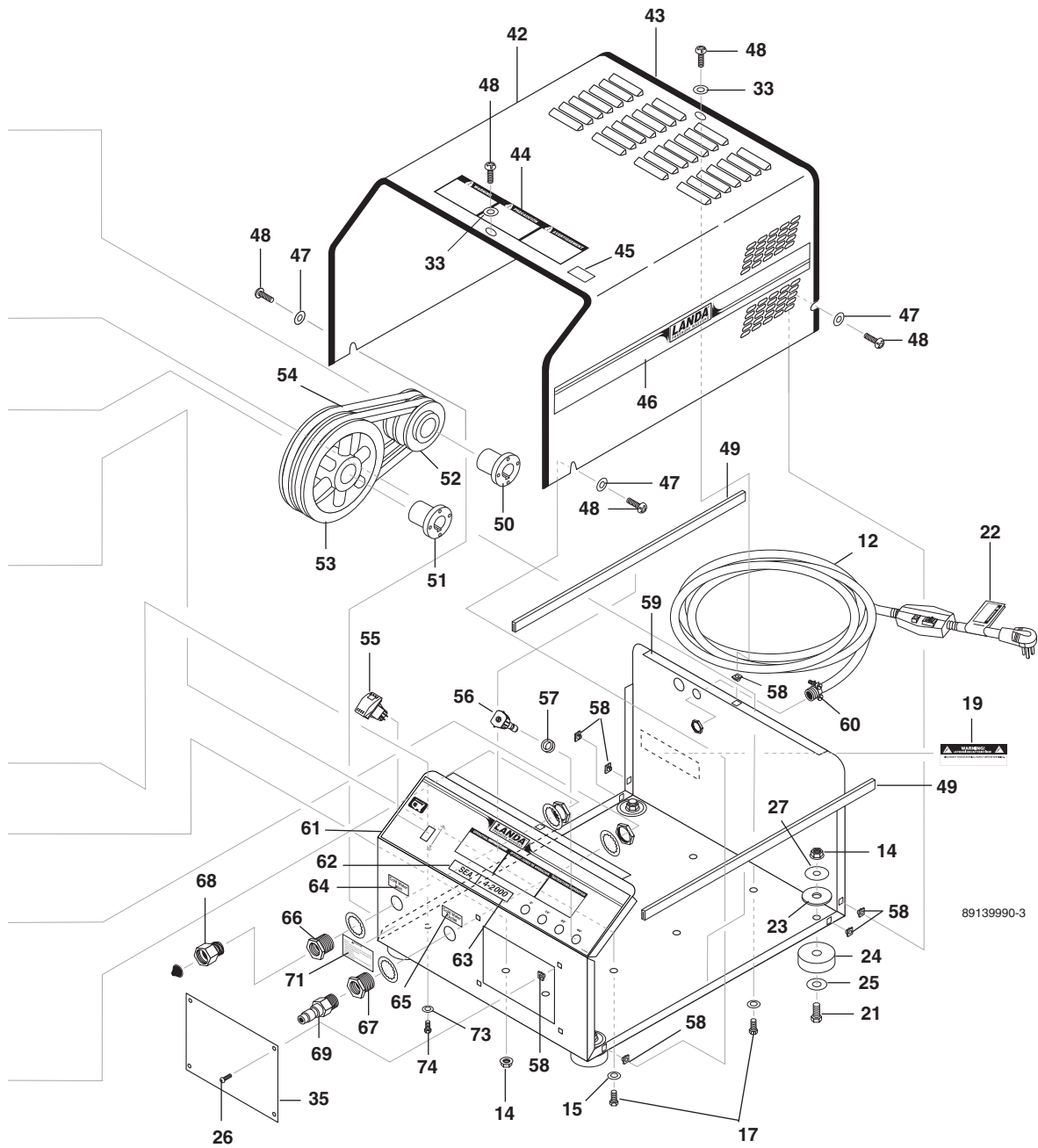
Date Oil Changed Month/Day/Year	Estimated Operating Hours Since Last Oil Change

EXPLODED VIEW-LEFT SIDE



89139990-2

EXPLODED VIEW-RIGHT SIDE



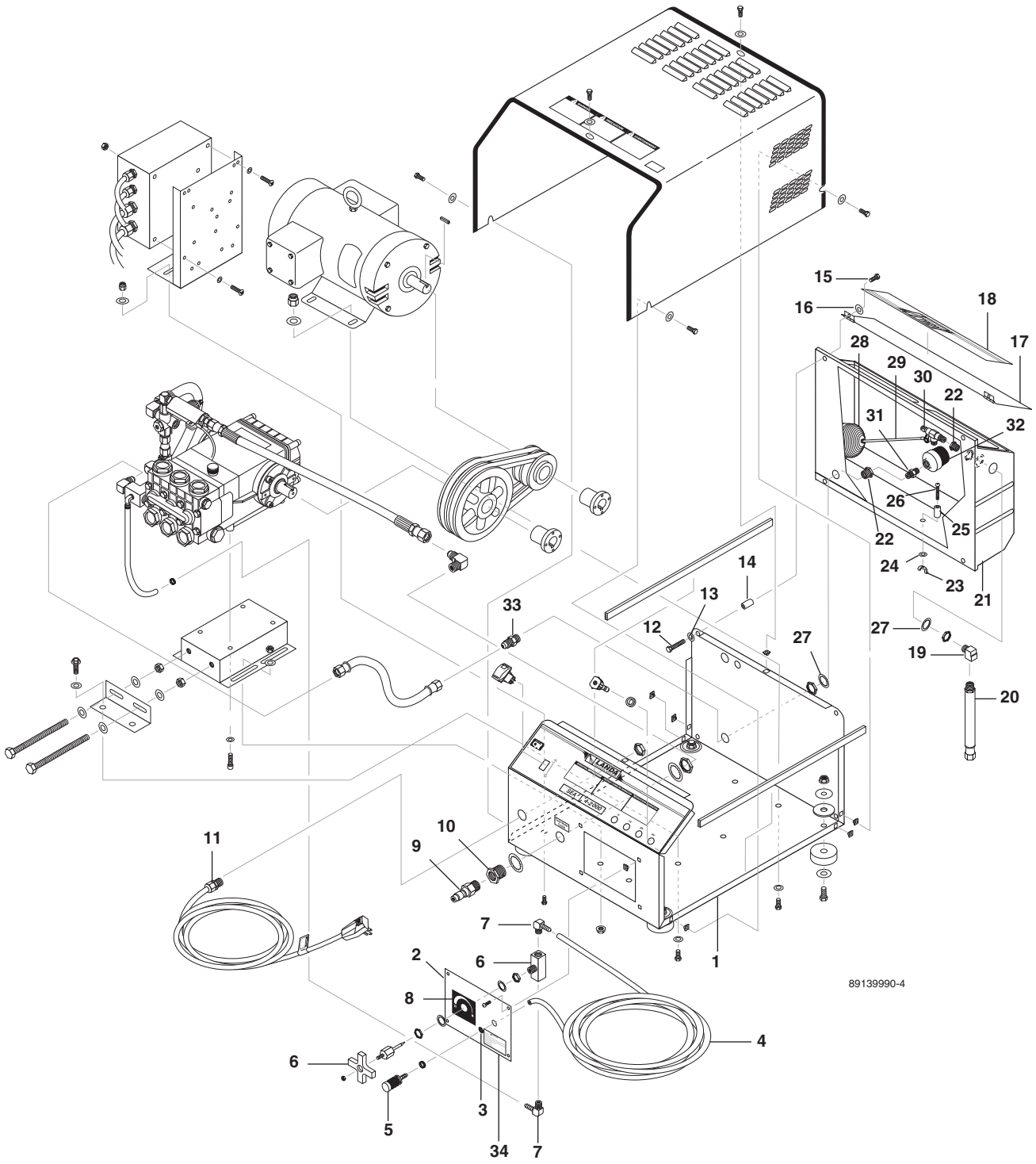
EXPLODED VIEW PARTS LIST

ITEM	PART NO.	DESCRIPTION	QTY	ITEM	PART NO.	DESCRIPTION	QTY
1		Contactors, See Specifications Pages	1	15	9.802-808.0	Washer, 3/8", SAE, SS	
		Overload, See Specifications Pages	1			(3-1100)	10
		Transformer, See Specifications Pages	1		(4-2000, 4-3000)	14	
		Primary Fuse, See Specifications Pages	2		9.802-805.0	Washer, 5/16" Flat SS	
		Secondary Fuse, See Specifications Pages	1			(3-1100)	4
2	8.751-306.0	Timer, Multi-Function, 24V-120/240V 5A	1	16	9.802-520.0	▲ Strain Relief, 3/4" (3-1100D; 4-2000A,B,C,F,G,H)	1
3	9.802-468.0	Relay, 120V, RH2B-UL-AC120	1		9.802-522.0	▲ Strain Relief, (4-3000B,C)	1
4	9.802-467.0	Base, Relay, SH2B-05, IDEC	1	17	9.802-721.0	Bolt, 3/8" x 1" SS (3-1100)	6
5	9.802-457.0	Rail Track (Time Delay)	6"		8.718-619.0	Bolt, 5/16" X 3/4" SS	10
		(Auto Start/Stop)	4"		(3-1100)	4	
6	9.802-759.0	Screw, 10/32" x 1/2" BH SOC, Black (All models except 3-1100)	1	18	9.802-774.0	Nut, 1/4" ESNA, NC, SS	2
	9.802-762.0	Screw, 10/32" x 1-1/4" RH, SL, Blk (3-1100)	1	19	9.800-016.0	Label, Electrical Disconnect Warning	1
			2	20	9.800-040.0	▲ Label, Ground	1
7	9.802-695.0	Nut, 10/32" KEP (w/Standoff Plate)	6	21	9.802-724.0	Bolt, 3/8" x 1-1/2", HH NC, SS	4
			10	22	8.932-969.0	Label, GFCI Warning	1
8	9.802-475.0	Box, Plastic 8" x 8" x 4" (3-1100)	1	23	9.802-067.0	Bumper Pad, Engine	4
	9.802-476.0	Box, Plastic 10" x 8" x 6" w/Lid (4-2000, 4-3000)	1	24	9.802-066.0	Pad, Soft Rubber, Duro 50	4
9	9.803-038.0	Bracket, Support for Elec. Box	1	25	9.802-818.0	Washer, 3/8" x 1", SS	4
10	9.802-515.0	Strain Relief, 1/2" Straight, Med	1	26	9.802-760.0	Screw, 1/4" x 1/2", BH SOL C/S SS	4
	9.802-524.0	▲ Locknut, 1/2"	1	27	9.802-812.0	Washer, 7/16" x 2-1/2", Zinc	4
11	9.802-518.0	Strain Relief, 3/4" Straight, Large (4-2000, 4-3000)	2	28	9.802-039.0	Nipple, 1/2" JIC, 3/8" Pipe	1
	9.802-526.0	▲ Locknut, 3/4" (4-2000, 4-3000)	2	29		Pump, See Specifications Pages	1
	9.802-515.0	Strain Relief, 1/2" Straight, Med. (3-1100)	2	30	8.718-682.0	Bolt, 3/8" x 3-1/2", Tap, SS	2
	9.802-524.0	▲ Locknut, 1/2" (3-1100)	2	31	9.803-136.0	Retainer, Pump Take UP	1
12	9.802-428.0	Cord, Service, 12/3 SJOWA (3-1100)	4.25 ft.	32	9.802-827.0	Nut, 3/8", SS	2
	9.802-429.0	Cord, Service, SEO, 12/4 (4-2000B, C, F, H, 4-3000C, F, N)	13.33 ft.	33	9.802-808.0	Washer, SAE, Flat, SS	2
	9.802-430.0	GFCI, 240V 30A, w/36' 10-3 Cord (4-2000A,G)	1	34	9.803-131.0	Rail, Pump	1
	9.802-431.0	GFCI, 120V 20A, w/36' 12-3 Cord (3-1100)	1	35	9.803-127.0	Cover, Access Hole, SEA	1
	9.802-436.0	Cord, Service, SEO 10/3 (4-2000A,G)	3.33 ft.	36	9.802-254.0	Hose, 1/4" Push-on	1.66 ft.
	9.802-437.0	Cord, Service, SEO, 10/4 (4-3000B,H)	13.33 ft.	37	9.802-259.0	Hose, 1/2" Push-on	1.3 ft.
					38	9.802-151.0	Swivel, 1/2" JIC Fem, Push-on
13		Motor, See Specifications Pages	1	39	8.918-422.0	Hose, 3/8" x 20", 2 Wire, Pressure Loop	1
14	9.802-788.0	Nut, 3/8" Whiz Loc SS (3-1100)	10	40	9.802-131.0	Elbow, 1/2" JIC x 3/8", 90°	1
		(4-2000, 4-3000)	14	41	9.802-039.0	Elbow, 1/2" JIC x 3/8", 90°	1
	8.718-887.0	Nut, 5/16" SS Whiz Loc (3-1100)	4	42	8.912-141.0	Cover, SEA, Stainless Steel	1
				43	9.802-071.0	Trim, 1/16", Black	8.25 ft.
				44	8.900-826.0	Label, Warning Instructions	1
				45	8.932-965.0	Label, Warning - Exposed Pulleys	1
				46	8.900-832.0	Label, SEA Series Stripe	2
				47	8.719-002.0	Washer, 5/16" x 1-1/4", Fender SS	4

EXPLODED VIEW PARTS LIST

ITEM	PART NO.	DESCRIPTION	QTY	ITEM	PART NO.	DESCRIPTION	QTY
48	8.718-757.0	Screw, 1/4" x 1/2" SS, Phil, PH	6	57	9.802-064.0	Grommet, Rubber, Nozzle Holder	4
49	9.802-073.0	Weather-strip, 1/8" x 1/2"	3.5 ft.	58	9.802-074.0	Nut, 1/4" Square Head	12
50	Motor Bushing, See Specifications Pages		1	59	8.912-140.0	Cabinet, SEA, SS	1
51	Pump Bushing, See Specifications Pages		1	60	9.802-522.0	Strain Relief,	1
52	Motor Pulley, See Specifications Pages		1	61	8.900-262.0	Label, SEA Control Panel	1
53	Pump Pulley, See Specifications Pages		1	62	8.900-253.0	Label, SEA	1
54	Belt, See Specifications Pages		2	63	8.900-403.0	Label, 3-1100	1
55	9.802-452.0	Switch, Rocker, Carling, M-Circuit, Red	1		8.900-409.0	Label, 4-2000	1
	9.802-451.0	Switch, Rocker, Carling, w/Green Light (Auto Start Option)	1		8.900-411.0	Label, 4-3000	1
56	8.712-357.0	Nozzle, 00055, Red (3-1100)	1	64	9.800-020.0	Label, Cold Water Inlet	1
	8.712-358.0	Nozzle, 15055, Yellow (3-1100)	1	65	8.932-970.0	Label, Cold Water Outlet	1
	8.712-359.0	Nozzle, 25055, Green (3-1100)	1	66	8.707-000.0	Connector, 1/2" Anchor	1
	8.712-360.0	Nozzle, 40055, White (3-1100)	1	67	8.706-998.0	Connector, 3/8" Anchor	1
	8.712-361.0	Nozzle, 0006, Red (All 4-2000 Models Except 4-20024F)	1	68	9.802-146.0	Swivel, 1/2" MP x 3/4" GHP w/Strainer	1
	8.712-362.0	Nozzle, 1506, Yellow (All 4-2000 Models Except 4-20024F)	1	69	9.802-171.0	Nipple, 3/8" x 3/8" NPT ST Male	1
	8.712-363.0	Nozzle, 2506, Green (All 4-2000 Models Except 4-20024F)	1	70	9.802-514.0	Strain Relief, 1/2" Small	1
	8.712-364.0	Nozzle, 4006, White (All 4-2000 Models Except 4-20024F)	1		9.802-524.0	▲ Locknut, 1/2"	1
	8.712-345.0	Nozzle, 0004, Red (4-3000)	1	71	9.800-049.0	Label, Manufacturers Cleaning Solution	1
	8.712-346.0	Nozzle, 1504, Yellow (4-3000)	1	72	9.802-774.0	Nut, 1/4 ESNA NC, SS	4
	8.712-347.0	Nozzle, 2504, Green (4-3000)	1	73	8.718-965.0	Washer, 1/4 Flat, SS	8
	8.712-348.0	Nozzle, 4004, White (4-3000)	1	74	8.718-603.0	Bolt, 1/4 x 3/4, NC HH, SS	4
	8.712-353.0	Nozzle, 0005, Red (4-20024F)	1	75	8.718-568.0	Washer, 1/4" Flat rubber, Back SS	4
	8.712-354.0	Nozzle, 1505, Yellow (4-20024F)	1			▲ Not Shown	
	8.712-355.0	Nozzle, 2505, Green (4-20024F)	1				
	8.712-356.0	Nozzle, 4005, White (4-20024F)	1				

EXPLODED VIEW - FLOAT TANK OPTION

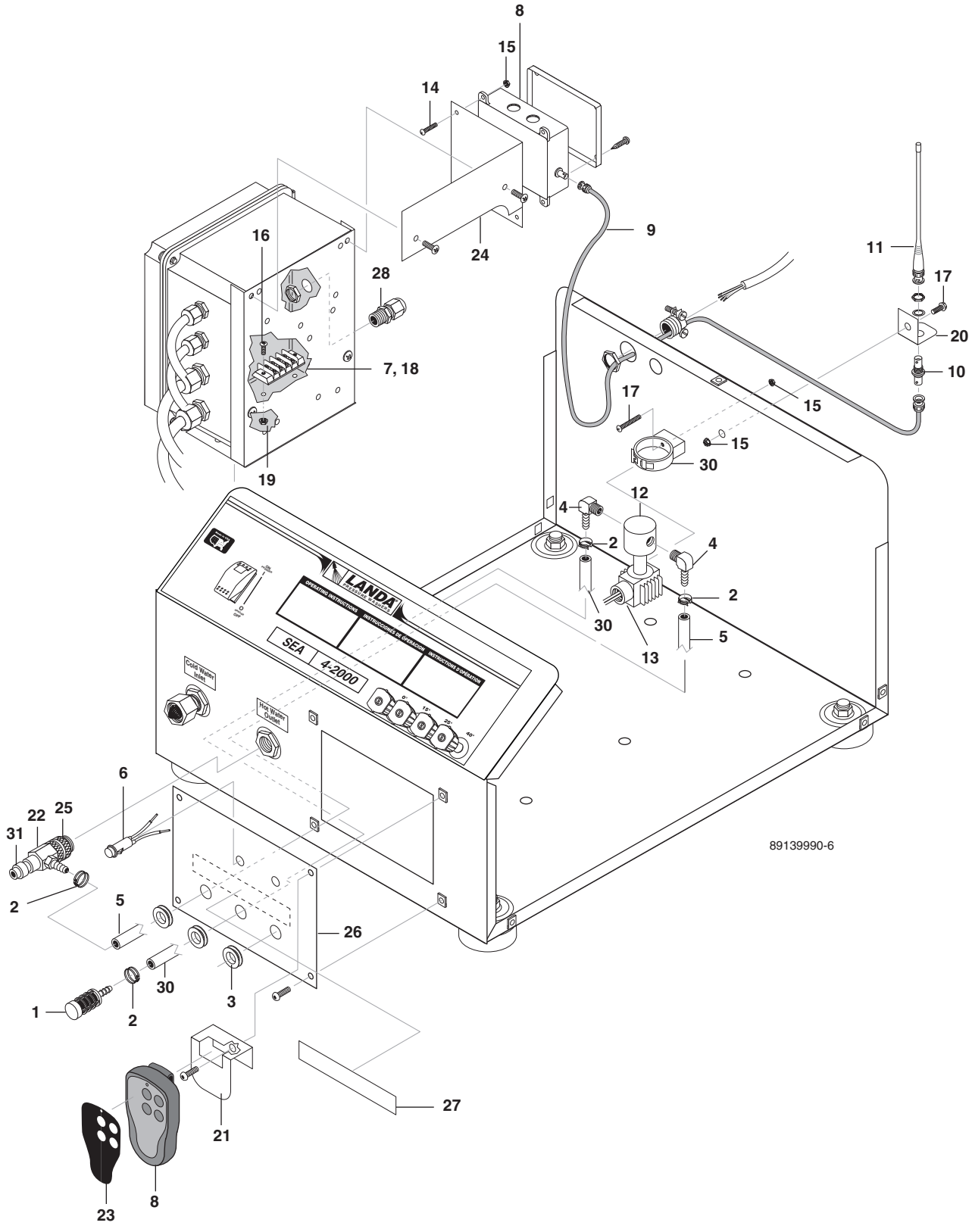


89139990-4

EXPLODED VIEW PARTS LIST

ITEM	PART NO.	DESCRIPTION	QTY	ITEM	PART NO.	DESCRIPTION	QTY
1	8.912-142.0	Cabinet, SEA w/Float Tank Option	1	19	8.706-829.0	Elbow, 1/2" Street, Brass	1
2	8.912-148.0	Cover, Access Hole, SEA w/Valve Hole	1	20	8.711-841.0	Connector, 8" Garden Hose	1
3	8.706-755.0	Bushing, 7/8"	1	21	9.802-084.0	Tank, Plastic Universal Float	1
4	9.802-251.0	Tube, 1/4" x 1/2" Clear Vinyl	8 ft.	22	8.707-000.0	Connector, 1/2" Anchor	2
5	8.707-058.0	Strainer, w/check valve 1/4" Hose Barb	1	23	9.802-823.0	Nut, 5/16"-8, Wing, SS	1
6	8.707-317.0	Valve, Flow Control	1	24	9.802-824.0	Washer, 5/16" SS	1
7	8.706-958.0	Hose Barb, 1/4" Barb x 1/4" Pipe, 90°	2	25	9.802-263.0	Tubing, 5/16" x 9/16", 50/60 Duro, Rubber	1.5"
8	8.900-825.0	Label, Chemical Control Valve	1	26	9.802-822.0	Screw, 5/16"-18 x 1-1/2" SS, Button Socket	1
9	9.802-171.0	Nipple, 3/8" x 3/8" NPT ST Male	1	27	8.719-039.0	Washer, 1-3/16" x 2-1/4", STL Rubber	2
10	8.706-998.0	Connector, 3/8" Anchor	1	28	8.706-512.0	Ball, Float, Black Plastic	1
11	9.802-518.0	Strain Relief, STRT LQ Tite	1	29	9.802-158.0	Stem, 4" Float	1
12	8.718-619.0	Bolt, 5/16" x 3/4" NC, Grade 5, SS	4	30	8.749-328.0	Valve, 1/2", Plastic Float	1
13	9.802-805.0	Washer, 5/16" Flat, SAE SS	4	31	8.706-797.0	Nipple, 1/2" Hex	1
14	9.803-532.0	Isolator, 5/16" THRD, Fem. x Fem., 1" x 1"	4	32	8.707-061.0	Strainer, 1/2" Basket	1
15	9.802-708.0	Screw, 5/16"-18 x 3/4" M PH TRH	4	33	9.802-128.0	Nipple, 1/2" JIC x 1/2" MPT Pipe	1
16	9.804-082.0	Washer, 1/4" SAE, Black, Zinc	4	34	9.800-049.0	Label, Manufacturer Cleaning Solutions	1
17	8.912-233.0	Lid & Hinges, Plastic Float Tank	1				
18	8.900-832.0	Label, Stripe	1				

HANDHELD WIRELESS EXPLODED VIEW - 1 STEP



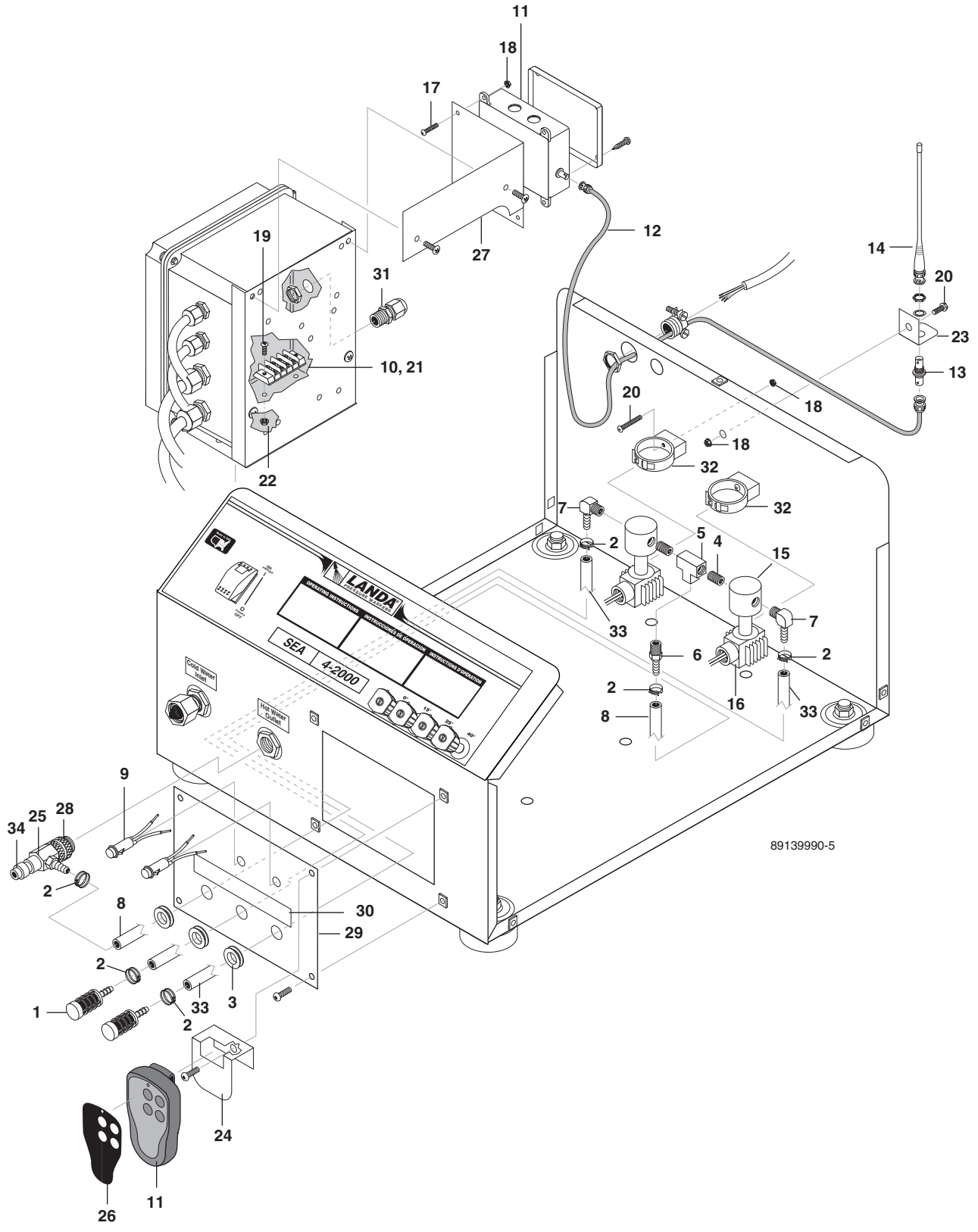
89139990-6

HANDHELD WIRELESS PARTS LIST - 1 STEP

ITEM	PART NO.	DESCRIPTION	QTY
1	8.707-057.0	Strainer, Plastic 1/4" Hose Barb	2
2	6.390-126.0	Clamp, Hose, .46-, .54 ST	4
3	8.706-538.0	Grommet, 1.375 OD x .75 ID x 3/8"	3
4	8.712-801.0	Hose Barb, 1/4" Barb x 1/4" Pipe 90°	2
5	9.802-251.0	Tube, 1/4" x 1/2", Clear Vinyl	6 ft.
6	9.802-455.0	Light, Indicator, Green 125V	1
7	9.802-491.0	Block, Terminal, 4 Pole	1
8	8.716-442.0	Wireless, Transmitter-Receiver, 4 Relay	1
9	8.716-444.0	Cable, Radio Remote, Coaxial Cable	1
10	8.716-445.0	Connector, Radio Remote, Bulkhead BNC-BNC	1
11	8.716-446.0	Antenna, Radio Remote, BNC Connection	1
12	8.725-433.0	Valve, Solenoid DEMA 482-2-C-6, 120V 04F20C2118AAF	1
13	9.802-533.0	Solenoid Coil, 120V AF4C05	1
14	8.718-569.0	Screw, 10-32 x 1/2 PL RDH PH	4
15	9.802-695.0	Nut, 10/32" KEPS	5
16	8.718-749.0	Screw, 8/32" x 3/4" SS Phil	2
17	9.802-764.0	Screw, 10/32" x 3/4" HH	2
18	9.802-494.0	▲ Bar, Jumper	2
19	9.802-785.0	Nut, 8/32", Keps	2
20	8.912-674.0	Bracket, Antenna Mount Wireless Remote	1
21	8.912-675.0	Bracket, Transmitter, Wireless Remote	1
22	8.904-203.0	Amerimax 24" Acid Ins. 3-5 GPM	1
23	8.930-156.0	Label, Landa SEA, LANCOM Remote Control	1
24	8.930-164.0	Base, LANCOM Receiver, -07	1
25	9.802-166.0	3/8 Coupler FEMNIC Brass	1
26	8.930-166.0	Cover, Access Hole, LANCOM, -07	1
27	8.930-167.0	Label, Chemical, Wireless	1
28	9.802-514.0	Strain Relief, Small	1
29	8.706-423.0	Hanger Pipe 1"	1
30	9.802-251.0	Tube, 1/4" x 1/2" Clear Vinyl	10 ft
31	9.802-170.0	Nipple, 3/8" x 3/8" NPT, ST, FEM	1

▲ Not Shown

HANDHELD WIRELESS EXPLODED VIEW - 2 STEP



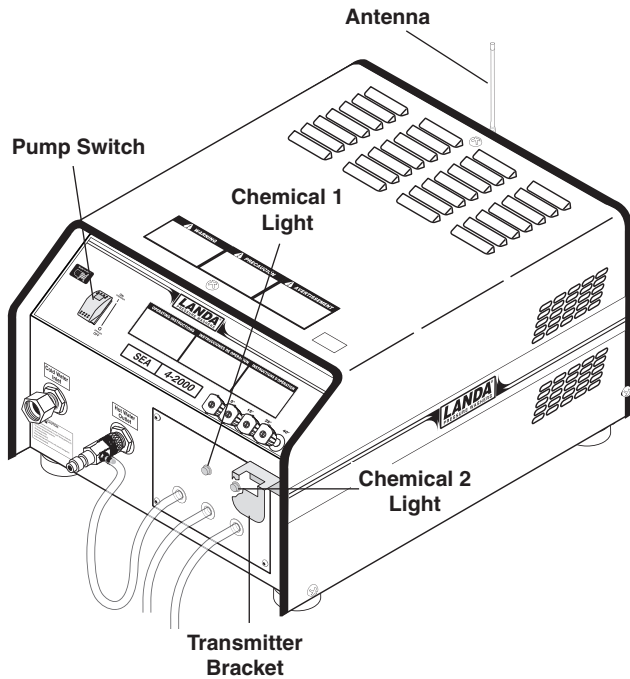
89139990-5

HANDHELD WIRELESS PARTS LIST - 2 STEP

ITEM	PART NO.	DESCRIPTION	QTY
1	8.707-057.0	Strainer, Plastic 1/4" Hose Barb	2
2	6.390-126.0	Clamp, Hose, .46-, .54 ST	6
3	8.706-538.0	Grommet, 1.375 OD x .75 ID x 3/8"	3
4	8.706-777.0	Nipple, 1/4" Close	2
5	8.706-841.0	Tee, 1/4" Female	1
6	8.706-941.0	Hose Barb, 1/4" Barb x 1/4" ML Pipe	1
7	8.712-801.0	Hose Barb, 1/4" Barb x 1/4" Pipe 90°	2
8	9.802-251.0	Tube, 1/4" x 1/2", Clear Vinyl	6 ft.
9	9.802-455.0	Light, Indicator, Green 125V	2
10	9.802-491.0	Block, Terminal, 4 Pole	1
11	8.716-442.0	Wireless, Transmitter-Receiver, 4 Relay	1
12	8.716-444.0	Cable, Radio Remote, CC58C-5 Coaxial Cable	1
13	8.716-445.0	Connector, Radio Remote, Bulkhead BNC-BNC	1
14	8.716-446.0	Antenna, Radio Remote, BNC Connection	1
15	8.725-433.0	Valve, Solenoid DEMA 482-2-C-6, 120V 04F20C2118AAF	2
16	9.802-533.0	Solenoid Coil, 120V AF4C05	2
17	8.718-569.0	Screw, 10-32 x 1/2 PL RDH PH	4
18	9.802-695.0	Nut, 10/32" KEPS	6
19	8.718-749.0	Screw, 8/32" x 3/4" SS Phil	2
20	9.802-764.0	Screw, 10/32" x 3/4" HH	3
21	9.802-494.0	▲ Bar, Jumper	2
22	9.802-785.0	Nut, 8/32", Keps	2
23	8.912-674.0	Bracket, Antenna Mount Wireless Remote	1
24	8.912-675.0	Bracket, Transmitter, Wireless Remote	1
25	8.904-203.0	Amerimax 24" Acid Ins. 3-5 GPM	1
26	8.930-156.0	Label, Landa SEA, LANCOM Remote Control	1
27	8.930-164.0	Base, LANCOM Receiver, -07	1
28	9.802-166.0	3/8 Coupler FEMNIC Brass	1
29	8.930-166.0	Cover, Access Hole, LANCOM, -07	1
30	8.930-167.0	Label, Chemical, Wireless	1
31	9.802-514.0	Strain Relief, Small	1
32	8.706-423.0	Hanger Pipe 1"	2
33	9.802-251.0	Tube, 1/4" x 1/2" Clear Vinyl	10 ft
34	9.802-170.0	Nipple, 3/8" x 3/8" NPT, ST, FEM	1

▲ Not Shown

HANDHELD WIRELESS OPERATING INSTRUCTIONS

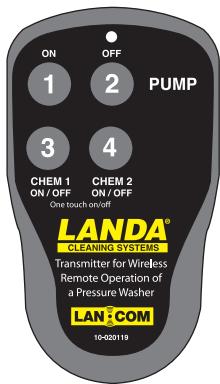


When machine is not in use, push control panel pump switch to the "OFF" position. Store transmitter on the transmitter bracket.

NOTE: Normal operating range for the transmitter is about 500 feet interference-free (line of site); 300 feet light interference (inside warehouse, pallet shelves); and 100 feet heavy interference (through concrete/stone walls, metal doors). If greater range is desired, the antenna can be mounted at a separate location. This requires a longer cable - RG-58-U coaxial with BNC end connectors.

For Wireless Remote Control Operation

Step 1: Push the control panel pump switch to the "ON" position (first click). With the switch in this position the wireless remote is ready for use.



Transmitter

Step 2: To control pressure washer in remote mode, press transmitter button 1 to turn pump "ON". Press transmitter button 2 to turn pump "OFF". Pump can also be controlled manually by pressing the control panel pump ON/OFF switch.

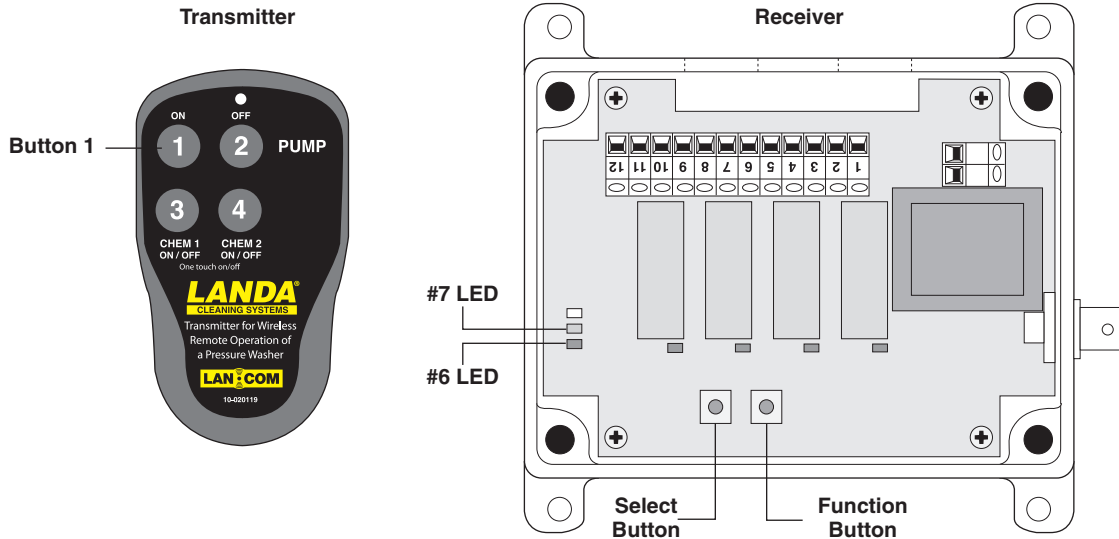
Chemical 1: To start chemical 1 flow, press transmitter button 3. The green indicator light will illuminate when chemical 1 is in use. Press button 3 again to stop chemical 1 flow.

Chemical 2: To start chemical 2 flow, press transmitter button 4. The green indicator light will illuminate when chemical 2 is in use. Press button 4 again to stop chemical 2 flow.

HANDHELD WIRELESS OPERATING INSTRUCTIONS

Transmitter/Receiver Communication Set-up at Factory

Programming communication between the receiver and transmitter requires the removal of the receiver enclosure lid. The receiver must have 120V power. This process utilizes the Function/Select buttons on the main panel control board (PCB) of the receiver (See Figure below). A number of colored LED's are used to indicate various steps in the programming process (See Figure below). It is recommended that this process is not done while wired to the machine.



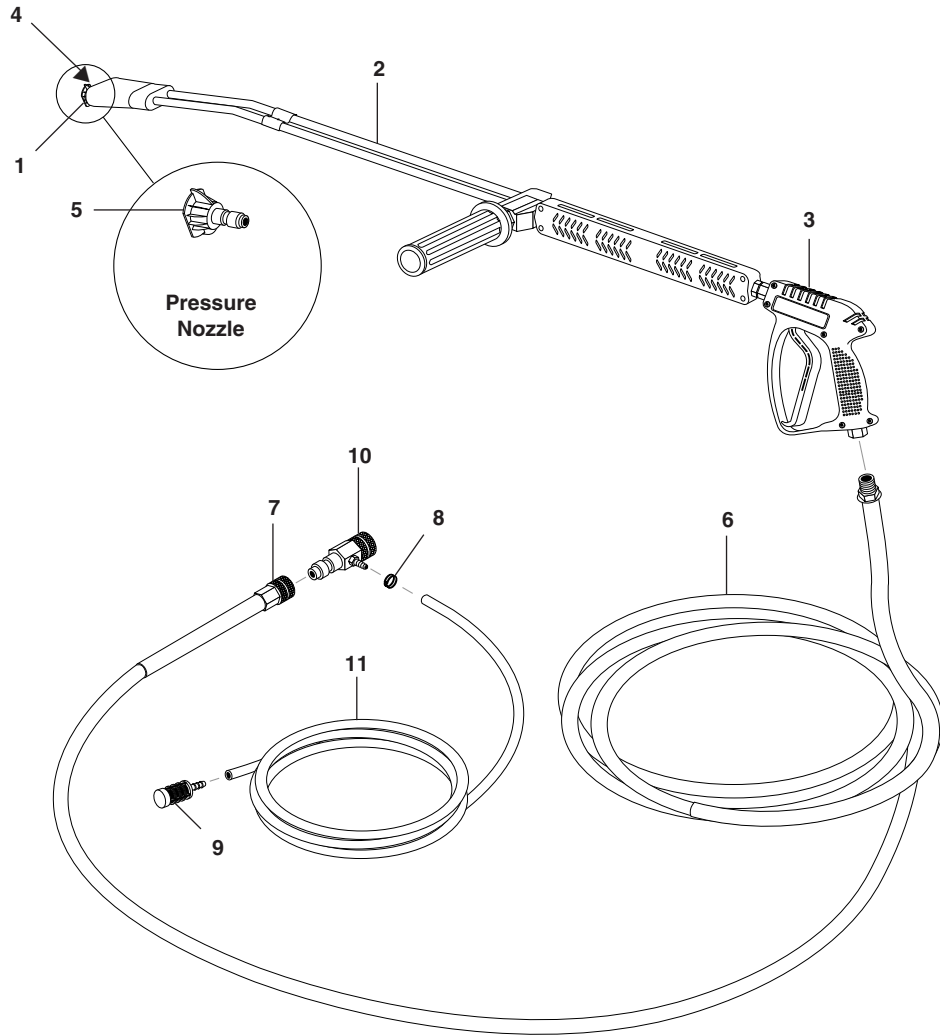
Receiver Programming LED's and Programming Switches

The T60-04CRV receiver programming process is as follows: While programming, make sure there are no other transmitters are transmitting in the area.

1. Press the **Function** button once to select the "Learn Code" mode. (#6 Red LED lights, you have approximately 5 seconds to make the next selection.)
2. Press the **Select** button once and then press any button on the transmitter and hold. (#6 Red LED will blink on/off three times and go out. After releasing the transmitter button, the relays will respond to the appropriate buttons (Button 1/R1; Button 2/R2; Button 3/R3; Button 4/R4); and the #6 red LED will blink on/off indicating that one or more adjustable codes have been learned by this receiver.
3. Press and hold the **Select** button for 6-8 seconds so the yellow LED is on solid. (#7 Yellow LED lights)
NOTE: This step is only completed when establishing the first transmitter communication.

The receiver is now programmed to the desired transmitter.

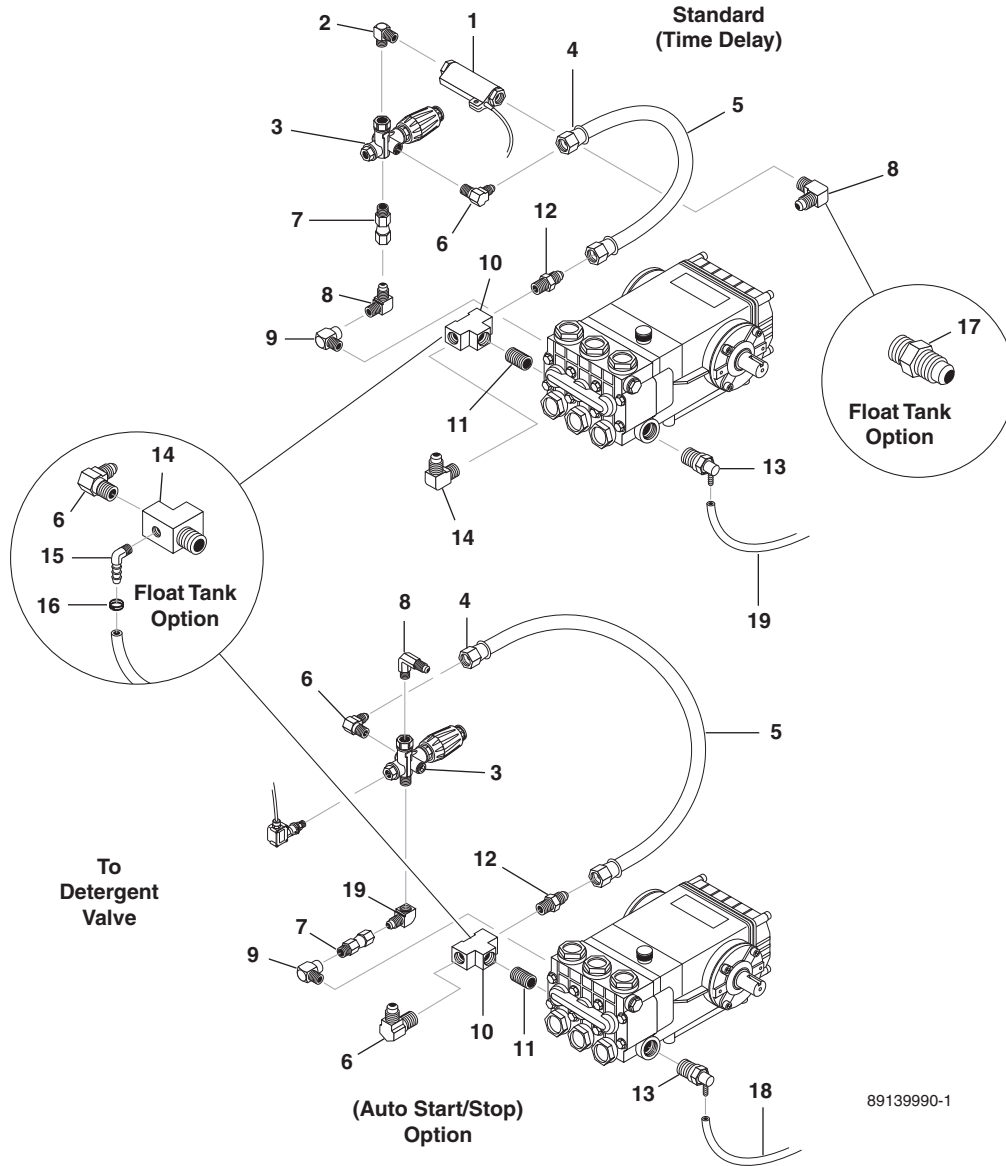
HOSE AND SPRAY GUN ASSEMBLY



HOSE AND SPRAY GUN PARTS LIST

ITEM	PART NO.	DESCRIPTION	QTY	ITEM	PART NO.	DESCRIPTION	QTY
1	9.802-165.0	Coupler, 1/4" Male	1	7	9.802-166.0	Coupler, 3/8", Female	1
	9.802-096.0	▲ Quick Coupler, O-Ring, Sm.	1		9.802-100.0	▲ Quick Coupler, O-Ring Lg.	1
2	8.711-293.0	Wand, VP Zinc 1/4", AL 344 w/coupler, w/soap nozzle	1	8	6.390-126.0	Clamp, Hose, .46-, .54 ST	1
	83-SSVPKIT	Repair Kit, AR Stainless Seat	1	9	8.707-057.0	Strainer, 1/4" Hose Barb	1
3	8.751-234.0	Gun, Landa, L1050, 5000 PSI, 10.4 GPM	1	10	9.802-216.0	Injector, Detergent, Non Adjust, #3	1
4	9.802-286.0	Soap Nozzle Only, 1/8", Brass	1	11	9.802-251.0	Tube, 1/4" x 1/2", Clear Vinyl	6 ft.
5	See Pg. 11 for	Correct Nozzles	1			▲ Not Shown	
6	8.739-072.0	Hose, 3/8" x 50', 2-Wire Tuff Skin	1				

PUMP ASSEMBLIES - EXPLODED VIEW



PUMP ASSEMBLIES - PARTS LIST

ITEM	PART NO.	DESCRIPTION	QTY	ITEM	PART NO.	DESCRIPTION	QTY
1	8.933-006.0	Switch, Flow MV60	1	9	8.706-207.0	Elbow, 3/8" Street	1
2	8.706-168.0	Elbow, 3/8", Male, Pipe	1	10	8.706-844.0	Tee, 1/2" Female, Pipe	1
3	8.750-298.0	Unloader, VRT3, 8 GPM @ 3630 PSI	1	11	8.706-790.0	Nipple, 1/2" Close	1
	9.802-362.0	Unloader, VB8 w/Switch (Auto Start/Stop Option)	1	12	9.802-128.0	Nipple, 1/2" JIC x 1/2" MPT	1
4	9.802-151.0	Swivel, 1/2" JIC, 1/2" Barb	2	13	9.803-670.0	Pump Protector, 1/2" 190°	1
5	9.802-259.0	Hose, 1/2" Push-on	20"	14	9.802-123.0	Tee, 1/2" w/1/8" PT Hole	1
6	9.802-129.0	Elbow, 1/2" MSAE x 3/8", MPT	1	15	8.706-955.0	Hose Barb, 1/4" x 1/8" MPT	1
7	9.802-048.0	Swivel, 1/2" JIC FEM, 3/8" Male	1	16	6.390-126.0	Clamp, Hose, .46-, .54 ST	1
8	9.802-039.0	Elbow, 1/2" JIC, x 3/8" MPT 90°	1	17	9.802-036.0	Nipple, 1/2 JIC x 3/8 MPT	1
				18	9.802-254.0	Hose, 1/4 Push-on	20"
				19	9.802-042.0	Elbow, 1/2" JIC x 3/8", FEM 90°	1

SPECIFICATIONS

PARTS SPECIFICATIONS

PUMP							MOTOR				
Machine	Model	Part #	Pu;ley	Pulley Part #	Bushing	Bushing Part #	Size	Voltage/ PH/Hertz	Part #	Pulley	Pulley Part #
3-11024D	LD3030	8.904-857.0	AK74H	9.802-369.0	24MM	9.802-402.0	2HP	120V/1PH/60	9.802-339.0	AK32X5/8"	9.804-004.0
4-20024A	LT5030	8.904-874.0	2AK84H	8.715-538.0	25MM	9.802-403.0	6HP	230V/1PH/60	9.802-336.0	2AK46H	8.715-547.0
4-20024B	LT5030	8.904-874.0	2AK84H	8.715-538.0	25MM	9.802-403.0	6HP	230V/3PH/60	8.751-004.0	2AK46H	8.715-547.0
4-20024C	LT5030	8.904-874.0	2AK84H	8.715-538.0	25MM	9.802-403.0	6HP	460V/3PH/60	8.751-004.0	2AK46H	8.715-547.0
4-20024F	LT5030	8.904-874.0	2AK84H	8.715-538.0	25MM	9.802-403.0	5HP	575V/3PH/60	8.715-121.0	2AK34H	9.804-047.0
4-20024G	LT5030	8.904-874.0	2AK84H	8.715-538.0	25MM	9.802-403.0	6HP	208V/1PH/60	9.802-337.0	2AK44H	8.715-546.0
4-20024H	LT5030	8.904-874.0	2AK84H	8.715-538.0	25MM	9.802-403.0	6HP	208V/3PH/60	9.802-330.0	2AK44H	8.715-546.0
4-30024B	LT5030	8.904-874.0	2BK90H	8.715-593.0	25MM	9.802-403.0	7.5HP	230V/3PH/60	8.751-014.0	2BK36H	9.802-383.0
4-30024C	LT5030	8.904-874.0	2BK90H	8.715-593.0	25MM	9.802-403.0	7.5HP	460V/3PH/60	8.751-014.0	2BK36H	9.802-383.0
4-30024F	LT5030	8.904-874.0	2BK90H	8.715-593.0	25MM	9.802-403.0	7.5HP	575V/3PH/60	8.715-106.0	2BK36H	9.802-383.0
4-30024H	LT5030	8.904-874.0	2BK90H	8.715-593.0	25MM	9.802-403.0	7.5HP	208V/3PH/60	9.802-333.0	2BK36H	9.802-383.0

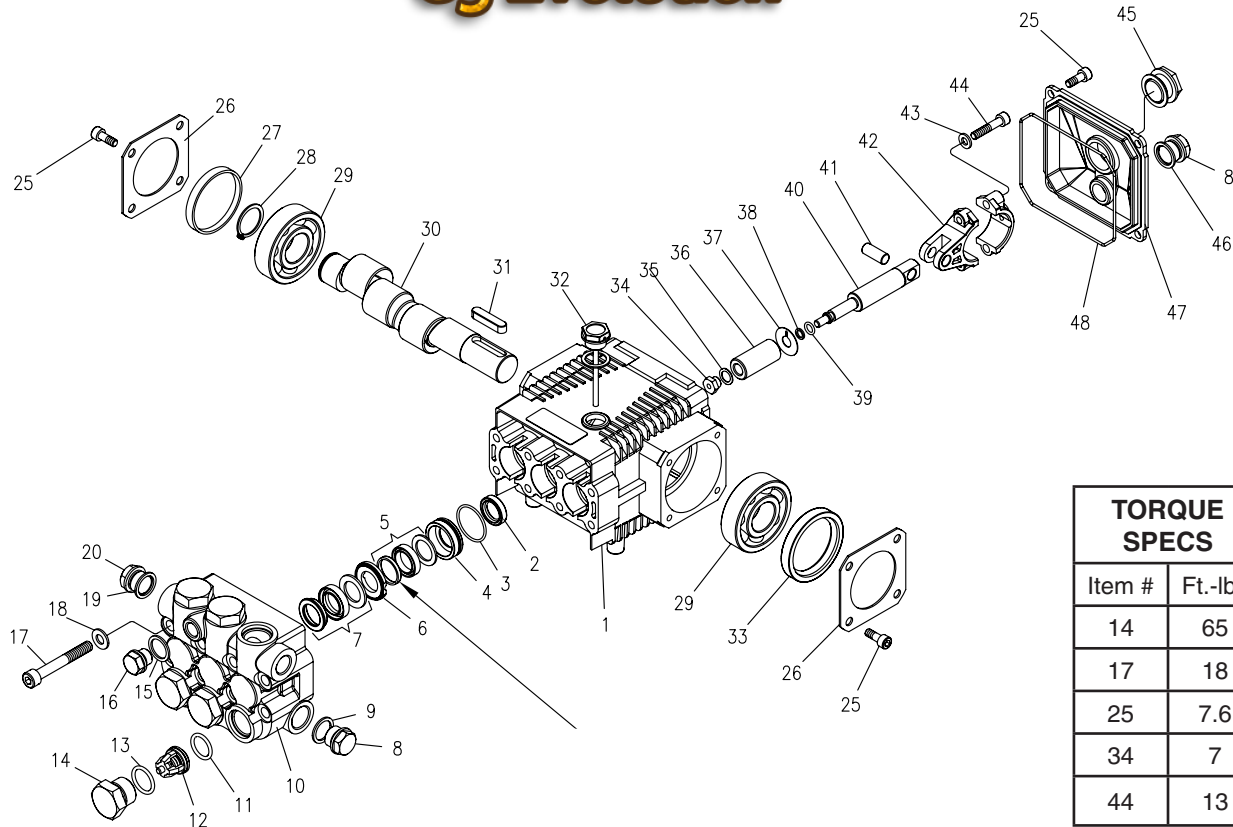
SPECIFICATIONS

MOTOR (CON'T)						CONTROLS					
Model	Bushing	Bushing Part #	Belt Size/ Qty	Part #	Contactora	Overload	Stepdown Transformer	Primary Fuse	Primary Fuse Part #	Secondary Fuse	Secondary Fuse Part #
3-11D	N/A	N/A	AX33 (1)	9.803-896.0	8.724-276.0	N/A	N/A	N/A	N/A	N/A	N/A
4-2A	HX1-1/8"	9.802-400.0	AX34 (2)	9.802-407.0	8.724-276.0	N/A	9.802-551.0	1a(2)	8.933-007.0	1/2 AMP (1)	9.802-463.0
4-2B	HX1-1/8"	9.802-400.0	AX34 (2)	9.802-407.0	8.724-272.0	8.724-304.0	9.802-551.0	1a(2)	8.933-007.0	1/2 AMP (1)	9.802-463.0
4-2C	HX1-1/8"	9.802-400.0	AX34 (2)	9.802-407.0	8.724-268.0	8.724-303.0	9.802-551.0	1/2a(2)	9.802-462.0	1/2 AMP (1)	9.802-463.0
4-2F	HX1-1/8"	9.802-400.0	AX34 (2)	9.802-407.0	8.724-268.0	8.724-303.0	9.803-668.0	1/2a(2)	9.802-462.0	1/2 AMP (1)	9.802-463.0
4-2G	HX1-1/8"	9.802-400.0	AX34 (2)	9.802-407.0	8.724-281.0	N/A	9.804-556.0	1a(2)	8.933-007.0	1/2 AMP (1)	9.802-463.0
4-2H	HX1-1/8"	9.802-400.0	AX34 (2)	9.802-407.0	8.724-276.0	8.724-304.0	9.804-556.0	1a(2)	8.933-007.0	1/2 AMP (1)	9.802-463.0
4-3B	HX1-3/8"	9.802-401.0	BX36 (2)	8.715-697.0	8.724-272.0	8.724-304.0	9.802-551.0	1a(2)	8.933-007.0	1/2 AMP (1)	9.802-463.0
4-3C	HX1-3/8"	9.802-401.0	BX36 (2)	8.715-697.0	8.724-268.0	8.724-312.0	9.802-551.0	1/2a(2)	9.802-462.05	1/2 AMP (1)	9.802-463.0
4-3F	HX1-3/8"	9.802-401.0	BX36 (2)	8.715-697.0	8.724-268.0	8.724-303.0	9.803-668.0	1/2a(2)	9.802-462.0	1/2 Amp (1)	9.802-463.0
4-3H	HX1-3/8"	9.802-401.0	BX36 (2)	8.715-697.0	8.724-276.0	8.724-305.0	9.804-556.0	1a(2)	8.933-007.0	1/2 AMP (1)	9.802-463.0

LD.1 SERIES PUMP EXPLODED VIEW

8.725-169.0 LD 3025R.1
 8.904-857.0 LD 3030R.1
 8.904-856.0 LD 4020R.1

G3 Evolution



LD.1 SERIES PUMP EXPLODED VIEW PARTS LIST

ITEM	PART NO.	DESCRIPTION	QTY	ITEM	PART NO.	DESCRIPTION	QTY
1	9.803-938.0	Crankcase	1	11*	9.803-947.0	O-Ring Ø1.78 x 15.54	6
2*	See Kits	Plunger Oil Seal	3	12*	See Kits	Valve Assembly	6
3*	See Kits	O-Ring Ø1.78 x 28.30	3	13*	9.803-948.0	O-Ring Ø2.62 x 18.77	6
4*	See Kits	Pressure Ring 15mm (3030)	3	14	9.803-949.0	Valve Plug	6
	See Kits	Pressure Ring 18mm (4020, 3025)	3	15	9.803-950.0	Copper Washer 1/4	1
5*	See Kits	U-Seal, 15mm (3030)	3	16	9.803-951.0	Brass Plug G1/4	1
	See Kits	U-Seal, 18mm (4020, 3025)	3	17	9.803-952.0	Manifold Stud Bolt	8
6*	See Kits	Intermediate Ring 15mm (3030)	3	18	9.802-884.0	Washer	8
	See Kits	Intermediate 18mm (4020, 3025)	3	19	9.803-198.0	Copper Washer 3/8	1
7*	See Kits	Intermed. Ring 15mm (3030)	3	20	9.802-925.0	Brass Plug 3/8	2
	See Kits	Intermed. Ring 18mm (4020, 3025)	3	25	9.802-939.0	Screw	12
8	9.802-926.0	Brass Plug 1/2"	1	26	9.803-953.0	Bearing Cover	2
9	9.803-199.0	Copper Washer 1/2"	1	27	9.803-954.0	Bearing Seal	1
10	9.803-946.0	Manifold Housing	1	28	9.802-914.0	Snap Ring	1
				29	9.803-955.0	Ball Bearing	2
				30	9.803-956.0	Crankshaft	1
				31	9.803-167.0	Crankshaft Key	1
				32	9.803-957.0	Oil Dipstick	1

LD.1 SERIES PUMP EXPLODED VIEW PARTS LIST (CONT)

ITEM	PART NO.	DESCRIPTION	QTY
33	8.933-010.0	Crankshaft Seal	1
34*	See Kits	Plunger Nut	3
35*	See Kits	Copper Spacer	3
36*	See Kits	Plunger, 15mm (3030)	3
	See Kits	Plunger, 18mm (4020, 3025)	3
37*	See Kits	Copper Spacer	3
38*	See Kits	O-Ring Ø1.78 x 5.28	3
39*	See Kits	Teflon Ring	3
40*	See Kits	Plunger Rod	3
41	9.803-965.0	Connecting Rod Pin	3
42	9.803-966.0	Connecting Rod	3
43	9.803-218.0	Spring Washer	6
44	8.933-020.0	Connecting Rod Screw	6
45	9.803-202.0	Sight Glass	1
46	9.803-197.0	Gasket	1
47	9.803-968.0	Crankcase Cover	1
48	9.803-969.0	O-Ring Ø2.62 x 107.62	1

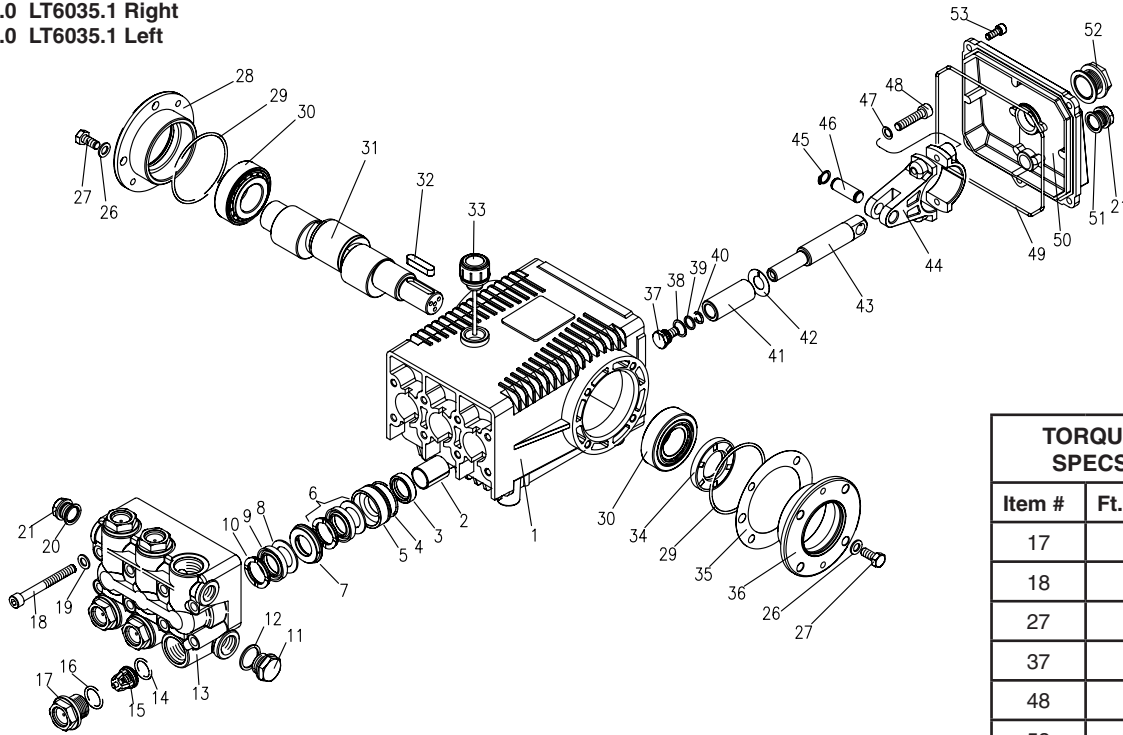
* Available in kit (See below)

REPAIR KIT NUMBER	8.725-354.0	8.725-356.0	8.725-355.0	8.725-357.0	9.803-934.0	9.803-935.0	9.803-936.0	9.803-937.0
KIT DESCRIPTION	Plunger Seal 15mm LD-3030	Plunger Seal 18mm LD-3025 LD-4020	Complete Seal Packing, 15mm LD-3030	Complete Seal Packing, 18mm LD-3025 LD-4020	Plunger 15mm LD-3030	Plunger 18mm LD-3025 LD4020	Complete Valve	Plunger Oil Seals
ITEM NUMBERS INCLUDED	3, 5, 7	3, 5, 7	3, 4, 5, 6, 7	3, 4, 5, 6, 7	34, 35, 36, 37, 38	34, 35, 36, 37, 38	11, 12, 13	2
NUMBER OF CYLINDERS KIT WILL SERVICE	3	3	1	1	1	1	6	3

LT.1 SERIES PUMP EXPLODED VIEW

- 8.904-869.0 LT4035.1 Right
- 8.904-870.0 LT4035.1 Left
- 8.904-871.0 LT4040.1 Right
- 8.904-872.0 LT4040.1 Left
- 8.904-874.0 LT5030.1 Right
- 8.904-879.0 LT5030.1 Left
- 8.904-881.0 LT6035.1 Right
- 8.904-883.0 LT6035.1 Left

G3 Evolution



TORQUE SPECS	
Item #	Ft.-Lbs.
17	75
18	45
27	18
37	10
48	30
53	7.6

LT.1 SERIES PUMP EXPLODED VIEW PARTS LIST

ITEM	PART NO.	DESCRIPTION	QTY	ITEM	PART NO.	DESCRIPTION	QTY
1	9.803-163.0	Crankcase	1	19	9.802-890.0	Washer	8
2	9.803-195.0	Plunger Guide	3	20	9.803-198.0	Copper Washer 3/8"	1
3*	See Kit	Plunger Oil Seal	3	21	9.802-925.0	Brass Plug 3/8"	1
4*	See Kit	O-Ring Ø1.78 x 31.47	3	26	9.802-884.0	Washer	8
5*	See Kit	"Pressure Ring, Brass	3	27	9.802-944.0	Hexagonal Screw	8
6*	See Kit	"U" Seal Low Pressure	3	28	9.803-182.0	Closed Bearing Housing	1
7*	See Kit	Intermediate Ring, Brass	3	29	9.803-186.0	O-Ring Ø2.62 x 71.12	2
8*	See Kit	Support Ring, Teflon Bronze	3	30	9.803-160.0	Roller Bearing, Tapered	2
9 *	See Kit	"U" Seal High Pressure	3	31	9.803-148.0	Crankshaft (GT4040.1, 5030.1, 6035.1)	1
10*	See Kit	Support Ring	3		9.803-149.0	Crankshaft (GT 4035.1)	1
11	9.802-926.0	Brass Plug, 1/2"	1	32	9.803-167.0	Crankshaft Key	1
12	9.803-199.0	Copper Washer 1/2"	1	33	9.802-923.0	Oil Dip Stick	1
13	9.802-933.0	Manifold Head	1	34	9.803-139.0	Crankshaft Seal	1
14*	See Kit	O-Ring Ø2.62 x 17.13	6	35	9.803-177.0	Shim	2
15*	See Kit	Valve Assembly	6	36	9.803-181.0	Bearing Housing	1
16*	See Kit	O-Ring Ø2.62 x 20.29	6	37*	See Kit	Plunger Bolt	3
17	9.802-928.0	Valve Plug	6	38*	See Kit	Copper Spacer	3
18	9.802-943.0	Manifold Stud Bolt	8				

LT.1 SERIES PUMP PARTS LIST (CONT)

ITEM	PART NO.	DESCRIPTION	QTY
39*	See Kit	O-Ring Ø1.78 x10.82	3
40*	See Kit	Teflon Ring	3
41*	See Kit	Plunger	3
42*	See Kit	Copper Spacer	3
43	9.803-143.0	Plunger Rod	3
44	9.803-157.0	Connecting Rod	3
45	9.802-912.0	Snap Ring	6
46	9.802-915.0	Connecting Rod Pin	3
47	9.802-889.0	Spring Washer	6
48	9.802-937.0	Connecting Rod Screw	6
49	9.803-194.0	O-Ring Ø2.62 x 152.07	1
50	9.803-166.0	Crankcase Cover	1
51	9.803-197.0	Gasket, G3/8	1
52	9.803-202.0	Sight Glass G3/4	1
53	9.802-939.0	Cover Screw	5

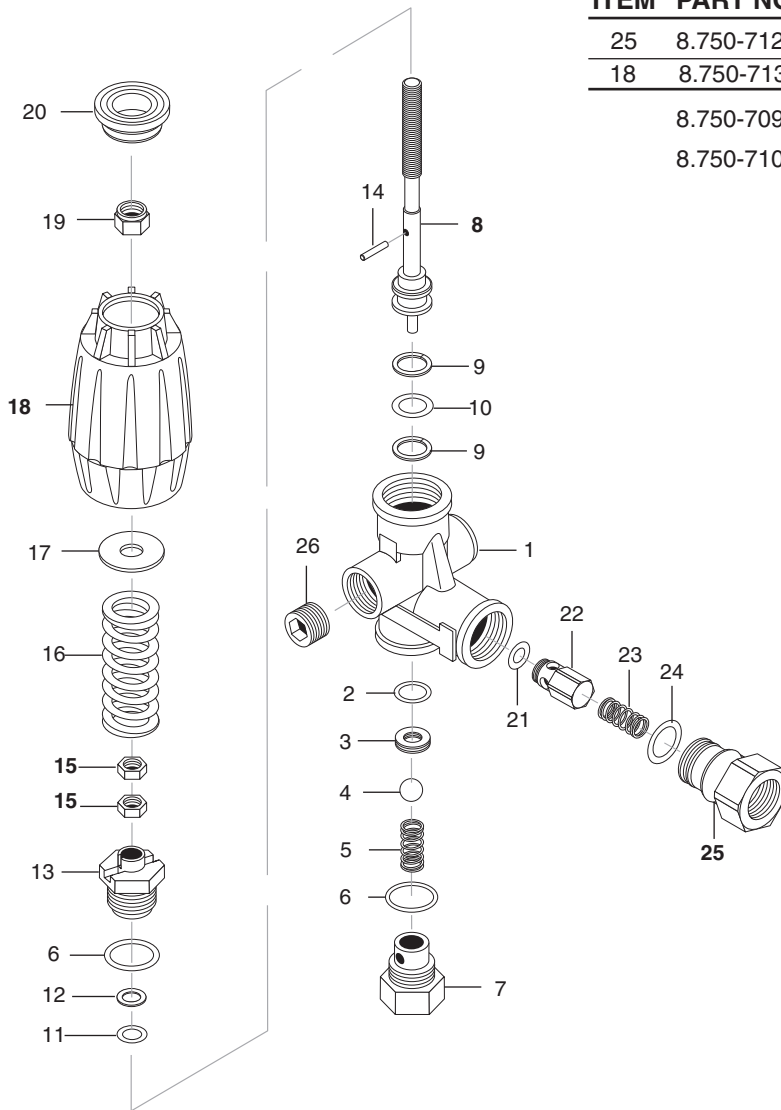
* Part available in kit (See below)

REPAIR KIT NUMBER	8.916-488.0	8.916-487.0	8.916-322.0	8.916-323.0	9.802-607.0	9.802-611.0
KIT DESCRIPTION	Plunger "U" Seal 20mm LT-4040.1, LT-6035.1 LT-4035.1	Plunger "U" Seal 22mm LT-5030.1	"U" Seal Packing Assy 20mm LT-4040.1 LT-6035.1 LT-4035.1	"U" Seal Packing Assy 22mm LT-5030.1	Plunger 20mm LT-4040.1 LT-6035.1 LT-4035.1	Plunger 22mm LT-5030.1
ITEM NUMBERS INCLUDED	4, 6, 8, 9, 10	4, 6, 8, 9, 10	4, 5, 6, 7, 8, 9,10	4, 5, 6, 7, 8, 9,10	37, 38, 39, 40, 41, 42	37, 38, 39, 40, 41, 42
NUMBER OF CYLINDERS KIT WILL SERVICE	3	3	1	1	1	1

REPAIR KIT NUMBER	9.802-603.0	9.802-606.0
KIT DESCRIPTION	Complete Valve (all pumps)	Plunger Oil Seals (all pumps)
ITEM NUMBERS INCLUDED	14, 15, 16	3
NUMBER OF CYLINDERS KIT WILL SERVICE	6	3

VRT3 UNLOADER EXPLODED VIEW AND PARTS LIST

8.750-297.0, 8 GPM, 2320 PSI
 8.750-298.0, 8 GPM, 3630 PSI
 8.750-299.0, 8 GPM, 4500 PSI



ITEM	PART NO.	DESCRIPTION	QTY
25	8.750-712.0	Outlet Fitting	1
18	8.750-713.0	Knob, Unloader	1
	8.750-709.0	Repair Kit, VRT3, 2320/3630 PSI	
	8.750-710.0	Repair Kit, VRT3, 4500 PSI	
		(Kit Items: 1, 4, 8-12, 16, 21-22)	

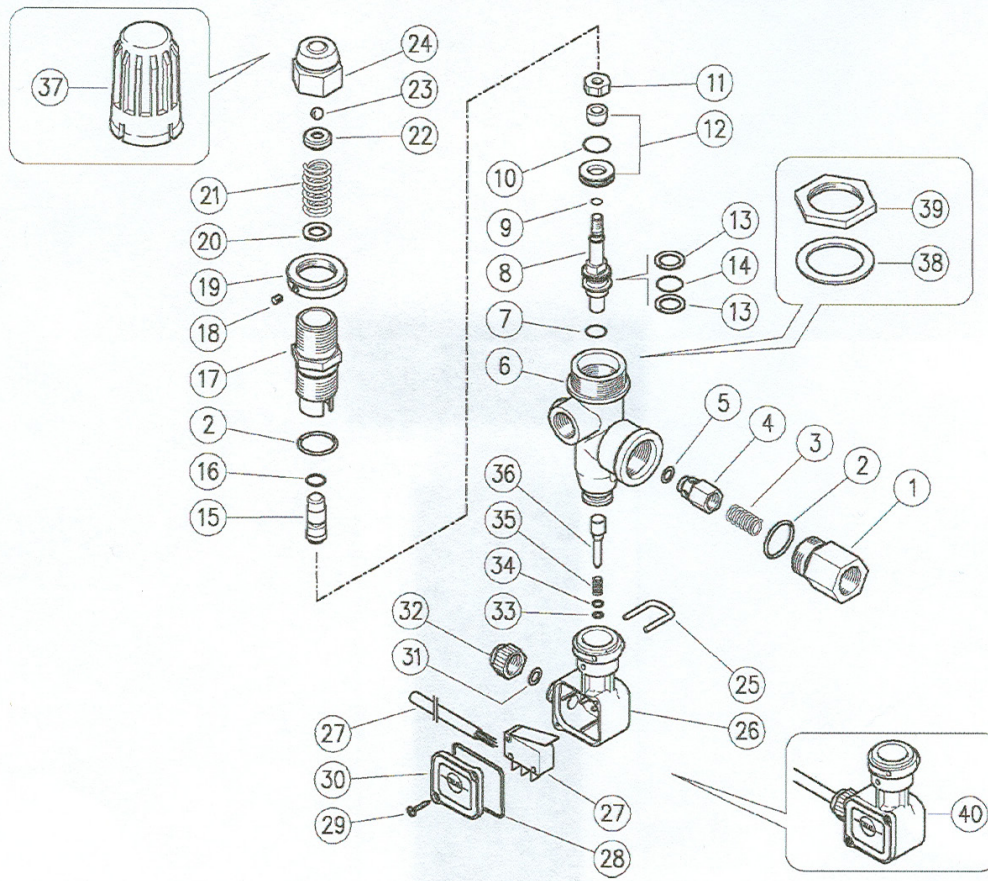
Unloader Adjustment Procedures

1. Remove lock nut (Item 19).
2. Remove adjustment knob (Item 18).
3. Loosen the two (2) nuts (Item 15), move them upward on stem (Item 8) until you see 4 or more threads below the nut.
4. Re-attach adjusting knob (Item 18).
5. Start machine. Open the trigger of the spray gun. Increase pressure by turning adjustment knob (Item 18) clockwise until pressure is at the desired operating pressure.
6. Remove the adjustment knob (Item 18), tighten the lower nut (Item 15) tightly against the upper nut (Item 15). Re-attach adjustment knob (Item 18) and screw down until contact is made with the nuts (Items 15). Screw down lock nut (Item 19) onto the stem (Item 8) until the threads cut into the nylon insert of the lock nut (Item 19).

*If adjustment knob (Item 18) **DOES NOT** make contact with upper nut (Items 15), remove adjusting knob (Item 18), re-adjust (raise) nuts (Items 15) on stem (Item 8) and re-attach adjustment knob (Item 18), then repeat step #6.

If adjustment knob (Item 18) **DOES make contact with upper nut; release the trigger of the spray gun and watch the pressure gauge for the pressure increase ("spike"). This "spike" **SHOULD NOT** exceed 500 psi above the operating pressure. If "spike" pressure exceeds the 500 psi limit, remove the adjusting knob (Item 18) and re-adjust (lower) the nuts (Items 15) on the stem (Item 8). Re-attach the adjusting knob (Item 18), then repeat step #6.

VB8 UNLOADER VALVE EXPLODED VIEW & PARTS LIST



ITEM	PART NO.	DESCRIPTION	QTY	ITEM	PART NO.	DESCRIPTION	QTY
1	60.0058.31	3/8 BSP F Outlet Fitting	1	22	60.1210.31	Upper Frame	1
2	10.3070.02*	O-ring 1.78 x 18.77 mm	2	23	14.7421.00	1/4" Ball	1
3	60.0053.51	Spring	1	24	60.1209.31	Brass Cap	1
4	60.0052.31	Check Valve	1	25	29.0087.51	Sst Clip	1
5	10.3213.00*	O-Ring 3 x 6 mm	1	26	29.0089.84	Plastic Housing	1
6	60.1201.35	VB8 Brass Body	1	27	12.5006.00	El.Cable + Micro Switch	1
7	10.3170.08*	O-Ring 2,62 x 7.6 mm	1	28	10.3206.01	O-Ring 2.62 x 28.25 mm	1
8	60.1206.31	Piston	1	29	16.3020.00	2.5 x 12 mm screw	2
9	10.3001.01*	O-Ring 1 x 4 mm	1	30	29.0088.84	Cover	1
10	10.3066.01*	O-Ring 1.78 x 15.6 mm	1	31	10.3169.00	O-ring 2.62 x 6.02 mm	1
11	60.1205.31	M 6 Nut	1	32	29.0082.84	Black Nut-40 Bar	1
12	60.2221.20*	VB8/9 Seat+Shutter	1	33	10.3038.00	O-Ring 1.78 x 3.68 mm	1
13	10.4021.00*	Back Ring 11.4 x 15.9 mm	2	34	14.3519.53	SST Washer 4 x 8 mm	1
14	10.3175.00*	O-ring 2.62 x 10.77 mm	1	35	60.2303.51	Spring	1
15	60.1204.31	Spring Guide	1	36	60.1281.31	PR 5 Pin	1
16	10.3167.01*	O-Ring 2.62 x 5.23 mm	1	37	60.1202.84	Plastic Handle (60.1290.00)	1
17	60.1203.31	Piston Housing	1	38	14.3582.00	Washer D. 30 mm (60.1290.00)	1
18	16.2100.00	M 4 x 4 mm Dowel	1	39	60.2254.31	M 30 Nut (60.1290.00)	1
19	60.1704.31	M 22 Nut	1	40	29.0096.24	PR 5 Pl.Housing Kit	1
20	14.3719.00	Washer 9 x 15 mm	1				
21	60.1208.61	3.2 x 33 mm Spring	1				
				Kit P/N Description			
				*K1	60.1212.24	VB8 Spare Parts Kit 9x1 pcs	1



**LANDA LIMITED NEW PRODUCT WARRANTY
PRESSURE WASHERS
WHAT THIS WARRANTY COVERS**

All LANDA pressure washers are warranted by LANDA to the original purchaser to be free from defects in materials and workmanship under normal use, for the periods specified below. This Limited Warranty is subject to the exclusions shown below, is calculated from the date of the original purchase, and applies to the original components only. Any parts replaced under this warranty will assume the remainder of the part's warranty period.

SEVEN YEAR PARTS AND ONE YEAR LABOR WARRANTY:

Components manufactured by LANDA, such as frames, handles, top and bottom wraps, float tanks, fuel tanks, belt guards, and internal components on the oil-end of Landa manufactured pumps. General, AR, Liberty, Comet and swash and wobble plate pumps have a one year warranty. Heating coils have a five year warranty from date of original machine purchase.

ONE YEAR PARTS AND ONE YEAR LABOR WARRANTY:

All other components, excluding normal wear items as described below, will be warranted for one year on parts and labor. Parts and labor warranty on these parts will be for one year regardless of the duration of the original component manufacturer's part warranty.

WARRANTY PROVIDED BY OTHER MANUFACTURERS:

Motors, generators, and engines, which are warranted by their respective manufacturers, are serviced through these manufacturers' local authorized service centers. LANDA is not authorized and has no responsibility to provide warranty service for such components.

WHAT THIS WARRANTY DOES NOT COVER

This warranty does not cover the following items:

1. Normal wear items, such as nozzles, spray guns, discharge hoses, wands, quick couplers, seals, filters, gaskets, O-rings, packings, pistons, pump valve assemblies, strainers, belts, brushes, rupture disks, fuses, pump protectors.
2. Damage or malfunctions resulting from accidents, abuse, modifications, alterations, incorrect installation, improper servicing, failure to follow manufacturer's maintenance instructions, or use of the equipment beyond its stated usage specifications as contained in the operator's manual.
3. Damage due to freezing, chemical deterioration, scale build up, rust, corrosion, or thermal expansion.
4. Damage to components from fluctuations in electrical or water supply.
5. Normal maintenance service, including adjustments, fuel system cleaning, and clearing of obstructions.
6. Transportation to service center, field labor charges, or freight damage.

WHAT YOU MUST DO TO OBTAIN WARRANTY SERVICE

While not required for warranty service, we request that you register your LANDA pressure washer by returning the completed registration card. In order to obtain warranty service on items warranted by LANDA, you must return the product to your Authorized LANDA Dealer, freight prepaid, with proof of purchase, within the applicable warranty period. If the product is permanently installed, you must notify your Authorized LANDA Dealer of the defect. Your Authorized LANDA Dealer will file a claim with Landa, who must subsequently verify the defect. In most cases, the part must be returned to LANDA freight prepaid with the claim. For warranty service on components warranted by other manufacturer's, your Authorized LANDA Dealer can help you obtain warranty service through these manufacturers' local authorized service centers.

LIMITATION OF LIABILITY

LANDA'S liability for special, incidental, or consequential damages is expressly disclaimed. In no event shall LANDA'S liability exceed the purchase price of the product in question. LANDA makes every effort to ensure that all illustrations and specifications are correct, however, these do not imply a warranty that the product is merchantable or fit for a particular purpose, or that the product will actually conform to the illustrations and specifications. Our obligation under this warranty is expressly limited at our option to the replacement or repair at a service facility or factory designated by us, of such part or parts as inspection shall disclose to have been defective. **THE WARRANTY CONTAINED HEREIN IS IN LIEU OF ALL OTHER WARRANTIES, EXPRESS OR IMPLIED, INCLUDING ANY IMPLIED WARRANTY OF MERCHANTABILITY OR FITNESS FOR A PARTICULAR PURPOSE ARE EXPRESSLY LIMITED TO THE DURATION OF THIS WRITTEN WARRANTY.** LANDA does not authorize any other party, including authorized LANDA Dealers, to make any representation or promise on behalf of LANDA, or to modify the terms, conditions, or limitations in any way. It is the buyer's responsibility to ensure that the installation and use of LANDA products conforms to local codes. While LANDA attempts to assure that its products meet national codes, it cannot be responsible for how the customer chooses to use or install the product. Some states do not allow limitations on how long an implied warranty lasts or the exclusion or limitation of incidental or consequential damages, so the above limitation or exclusion may not apply to you. This warranty gives you specific legal rights and you may also have other rights which vary from state to state.

LANDA

www.landa.com

LANDA[®]

Form #8.913-999.0 • Revised 02/12 • Printed in U.S.A.